

# T-FIT<sup>®</sup> HYGIENE

## Unique Insulation Technology

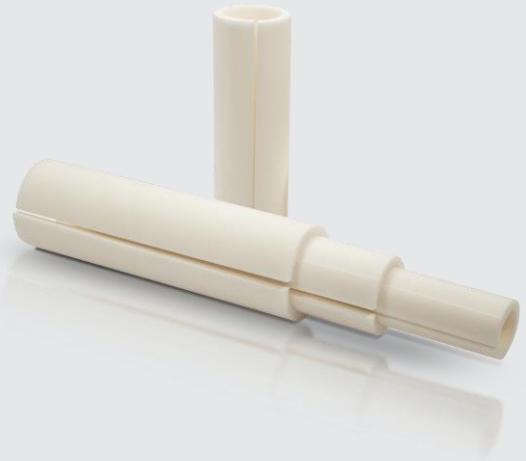
# T-FIT<sup>®</sup>

### Product information

#### Typical Values

T-FIT<sup>®</sup> Hygiene is manufactured from Zotefoams ZOTEK<sup>®</sup> F43 HT closed cell PVDF foam.

The values provided in this Product Information Sheet represent data gathered from random samples of our production of T-FIT<sup>®</sup> Hygiene foam and represent typical data. These are given to the best of our knowledge and should be considered as guidance only for selecting a suitable grade for a given application.



| Property                         | Test Standard    | Typical Value                                      |
|----------------------------------|------------------|--|
| <b>Material</b>                  |                  | ZOTEK <sup>®</sup> F43 HT<br>Closed Cell PVDF Foam |
| <b>Service Temperature</b>       | See Notes Below* | -80 °C to +145 °C                                  |
| <b>Thermal Conductivity</b>      |                  |  |
| Mean temperature of 25 °C        | ISO 8301         | 0.0344 W/m.K                                       |
| Mean temperature of 50 °C        |                  | 0.0370 W/m.K                                       |
| Mean temperature of 80 °C        |                  | 0.0405 W/m.K                                       |
| <b>Fire Certification</b>        |                  |  |
| Euroclass                        | EN13501-1        | C – s2, d0   |
| <b>Water Vapour Transmission</b> | ISO 1663         | 7250, μ Value                                      |
| <b>Leachable Ions</b>            | ASTM C-871       | Pass   |
| <b>Fungus Resistance</b>         | ASTM G21-15      | Full test complete<br>No signs after 28 days       |

\* These are extreme temperatures. For continuous use please contact your local T-FIT<sup>®</sup> representative

# T-FIT<sup>®</sup> HYGIENE

## Unique Insulation Technology

# T-FIT<sup>®</sup>

| Product Code        | Description: T-FIT Hygiene, Straight Tubes                              | Standard  | Insulation Sizing ID |        |
|---------------------|---|-----------|----------------------|--------|
|                     |   |           | in                   | mm     |
| TFHS012A12U000-9001 | ASME BPE 0.5" OD 12.7MM T-FIT Hygiene Insulating Straight 12.7mm THK    | ASME BPE  | 0.5"                 | 12.70  |
| TFHS012A06U000-9001 | ASME BPE 0.5" OD 12.7MM T-FIT Hygiene Insulating Straight 6.35mm THK    | ASME BPE  | 0.5"                 | 12.70  |
| TFHS019A12U000-9002 | ASME BPE 0.75" OD 19.0MM T-FIT Hygiene Insulating Straight 12.7mm THK   | ASME BPE  | 0.75"                | 19.00  |
| TFHS019A06U000-9002 | ASME BPE 0.75" OD 19.0MM T-FIT Hygiene Insulating Straight 6.35mm THK   | ASME BPE  | 0.75"                | 19.00  |
| TFHS025A12U000-9003 | ASME BPE 1.0" OD 25.40mm T-FIT Hygiene Insulating Straight 12.70mm THK  | ASME BPE  | 1.0"                 | 25.40  |
| TFHS025A06U000-9003 | ASME BPE 1.0" OD 25.40mm T-FIT Hygiene Insulating Straight 6.35mm THK   | ASME BPE  | 1.0"                 | 25.40  |
| TFHS038A12U000-9004 | ASME BPE 1.5" OD 38.10mm T-FIT Hygiene Insulating Straight 12.70mm THK  | ASME BPE  | 1.5"                 | 38.10  |
| TFHS038A06U000-9004 | ASME BPE 1.5" OD 38.10mm T-FIT Hygiene Insulating Straight 6.35mm THK   | ASME BPE  | 1.5"                 | 38.10  |
| TFHS050A12U000-9005 | ASME BPE 2.0" OD 50.80mm T-FIT Hygiene Insulating Straight 12.70mm THK  | ASME BPE  | 2.0"                 | 50.80  |
| TFHS050A06U000-9005 | ASME BPE 2.0" OD 50.80mm T-FIT Hygiene Insulating Straight 6.35mm THK   | ASME BPE  | 2.0"                 | 50.80  |
| TFHS063A12U000-9006 | ASME BPE 2.5" OD 63.50mm T-FIT Hygiene Insulating Straight 12.70mm THK  | ASME BPE  | 2.5"                 | 63.50  |
| TFHS063A06U000-9006 | ASME BPE 2.5" OD 63.50mm T-FIT Hygiene Insulating Straight 6.35mm THK   | ASME BPE  | 2.5"                 | 63.50  |
| TFHS076A12U000-9007 | ASME BPE 3.0" OD 76.20mm T-FIT Hygiene Insulating Straight 12.70mm THK  | ASME BPE  | 3.0"                 | 76.20  |
| TFHS076A06U000-9007 | ASME BPE 3.0" OD 76.20mm T-FIT Hygiene Insulating Straight 6.35mm THK   | ASME BPE  | 3.0"                 | 76.20  |
| TFHS101A12U000-9008 | ASME BPE 4.0" OD 101.60mm T-FIT Hygiene Insulating Straight 12.70mm THK | ASME BPE  | 4.0"                 | 101.60 |
| TFHS101A06U000-9008 | ASME BPE 4.0" OD 101.60mm T-FIT Hygiene Insulating Straight 6.35mm THK  | ASME BPE  | 4.0"                 | 101.60 |
| TFHS021112U000-9009 | ISO 1127 DN15 OD 21.3mm T-FIT Hygiene Insulating Straight 12.7mm THK    | ISO 1127  | DN15                 | 21.30  |
| TFHS021106U000-9009 | ISO 1127 DN15 OD 21.3mm T-FIT Hygiene Insulating Straight 6.35mm THK    | ISO 1127  | DN15                 | 21.30  |
| TFHS026112U000-9010 | ISO 1127 DN20 OD 26.9MM T-FIT Hygiene Insulating Straight 12.7mm THK    | ISO 1127  | DN20                 | 26.90  |
| TFHS026106U000-9010 | ISO 1127 DN20 OD 26.9mm T-FIT Hygiene Insulating Straight 6.35mm THK    | ISO 1127  | DN20                 | 26.90  |
| TFHS033112U000-9011 | ISO 1127 DN25 OD 33.7mm T-FIT Hygiene Insulating Straight 12.7mm THK    | ISO 1127  | DN25                 | 33.70  |
| TFHS033106U000-9011 | ISO 1127 DN25 OD 33.7mm T-FIT Hygiene Insulating Straight 6.35mm THK    | ISO 1127  | DN25                 | 33.70  |
| TFHS048112U000-9012 | ISO 1127 DN40 OD 48.3mm T-FIT Hygiene Insulating Straight 12.7mm THK    | ISO 1127  | DN40                 | 48.30  |
| TFHS048106U000-9012 | ISO 1127 DN40 OD 48.3mm T-FIT Hygiene Insulating Straight 6.35mm THK    | ISO 1127  | DN40                 | 48.30  |
| TFHS060112U000-9013 | ISO 1127 DN50 OD 60.3mm T-FIT Hygiene Insulating Straight 12.7mm THK    | ISO 1127  | DN50                 | 60.30  |
| TFHS060106U000-9013 | ISO 1127 DN50 OD 60.3mm T-FIT Hygiene Insulating Straight 6.35mm THK    | ISO 1127  | DN50                 | 60.30  |
| TFHS076112U000-9014 | ISO 1127 DN65 OD 76.1mm T-FIT Hygiene Insulating Straight 12.7mm THK    | ISO 1127  | DN65                 | 76.10  |
| TFHS076106U000-9014 | ISO 1127 DN65 OD 76.1mm T-FIT Hygiene Insulating Straight 6.35mm THK    | ISO 1127  | DN65                 | 76.10  |
| TFHS088112U000-9015 | ISO 1127 DN80 OD 88.9mm T-FIT Hygiene Insulating Straight 12.7mm THK    | ISO 1127  | DN80                 | 88.90  |
| TFHS088106U000-9015 | ISO 1127 DN80 OD 88.9mm T-FIT Hygiene Insulating Straight 6.35mm THK    | ISO 1127  | DN80                 | 88.90  |
| TFHS114106U000-9016 | ISO 1127 DN100 OD 114.3mm T-FIT Hygiene Insulating Straight 6.35mm THK  | ISO 1127  | DN100                | 114.30 |
| TFHS023D06U000-9004 | DIN 11850 DN20 OD 23.00mm T-FIT Hygiene Insulating Straight 6.35mm THK  | DIN 11850 | DN20                 | 23.00  |
| TFHS029D06U000-9005 | DIN 11850 DN25 OD 29.00mm T-FIT Hygiene Insulating Straight 6.35mm THK  | DIN 11850 | DN25                 | 29.00  |
| TFHS036D06U000-9006 | DIN 11850 DN32 OD 35.00mm T-FIT Hygiene Insulating Straight 6.35mm THK  | DIN 11850 | DN32                 | 35.00  |
| TFHS041D06U000-9007 | DIN 11850 DN40 OD 41.00mm T-FIT Hygiene Insulating Straight 6.35mm THK  | DIN 11850 | DN40                 | 41.00  |
| TFHS053D06U000-9008 | DIN 11850 DN50 OD 53.00mm T-FIT Hygiene Insulating Straight 6.35mm THK  | DIN 11850 | DN50                 | 53.00  |
| TFHS070D06U000-9009 | DIN 11850 DN65 OD 70.00mm T-FIT Hygiene Insulating Straight 6.35mm THK  | DIN 11850 | DN65                 | 70.00  |

# T-FIT<sup>®</sup> HYGIENE

## Unique Insulation Technology

T-FIT<sup>®</sup>

### Exclusion of Liability

Any information contained in this document is, to the best of the knowledge and belief of Zotefoams plc and of Zotefoams Inc. (together herein referred to as ZOTEFOAMS), accurate. Any liability on the part of ZOTEFOAMS or any subsidiary or holding company of ZOTEFOAMS for any loss, damage, costs or expenses directly or indirectly arising out of the use of such information or the use, application, adaptation or processing of any goods, materials or products described herein is, save as provided in ZOTEFOAMS' conditions of sale ("Conditions of Sale"), hereby excluded to the fullest extent permitted by law. Where ZOTEFOAMS' goods or materials are to be used in conjunction with other goods or materials, it is the responsibility of the user to obtain from the manufacturers or suppliers of the other goods or materials all technical data and other properties relating to those other goods or materials. Save as provided in the Conditions of Sale no liability can be accepted in respect of the use of ZOTEFOAMS' goods or materials in conjunction with any other goods or materials.

Where ZOTEFOAMS' goods or materials are likely to come into contact with foodstuffs or pharmaceuticals, whether directly or indirectly, or are likely to be used in the manufacture of toys, prior written confirmation of compliance with relevant legislative or regulatory standards for those applications may be requested from ZOTEFOAMS, if appropriate. Save as provided in the Conditions of Sale no liability can be accepted for any damage, loss or injury directly or indirectly arising out of any failure by the user to obtain such confirmation or to observe any recommendations given by or on behalf of ZOTEFOAMS.

ZOTEFOAMS MAKES NO WARRANTIES EXPRESS OR IMPLIED, EXCEPT TO THE EXTENT SET OUT IN THE CONDITIONS OF SALE, AND HEREBY SPECIFICALLY EXCLUDES ANY IMPLIED WARRANTY OF MERCHANTABILITY OR FITNESS FOR A PARTICULAR PURPOSE WITH RESPECT TO ANY GOODS, MATERIALS OR PRODUCTS DESCRIBED HEREIN.

Zotefoams plc Management systems are covered by the following:



**Quality**  
FM 01870  
ISO 9001 2015



**Safety**  
OHS 52538  
OHSAS 18001 2007



**Environment**  
EMS 36270  
ISO 14001 2015

#### Zotefoams plc

675 Mitcham Road  
Croydon  
CR9 3AL  
United Kingdom

Tel: +44 (0)20 8664 1602  
Email: [t-fitsales@zotefoams.com](mailto:t-fitsales@zotefoams.com)

#### Zotefoams T-FIT Material Technology (Kunshan) Co., Ltd

No. 181 Huanlou Rd  
Develop Zone, Kunshan City  
Jiangsu Province  
China  
215333

Tel: +86 (0)512 5012 6001-8001  
Email: [t-fitchina@zotefoams.com](mailto:t-fitchina@zotefoams.com)

#### T-FIT Insulation Solutions India Private Limited

810, Shapath V, S.G. Highway,  
Ahmedabad,  
Gujarat.  
380015

Tel: +91 7433946464  
Email: [t-fitindia@zotefoams.com](mailto:t-fitindia@zotefoams.com)

T-FIT<sup>®</sup> and ZOTEK<sup>®</sup> are registered trademarks of Zotefoams plc.

Issue 1 Revision 1  
March 2020

If you would like more information email: [techsupport@zotefoams.com](mailto:techsupport@zotefoams.com) or visit our website [www.zotefoams.com](http://www.zotefoams.com)