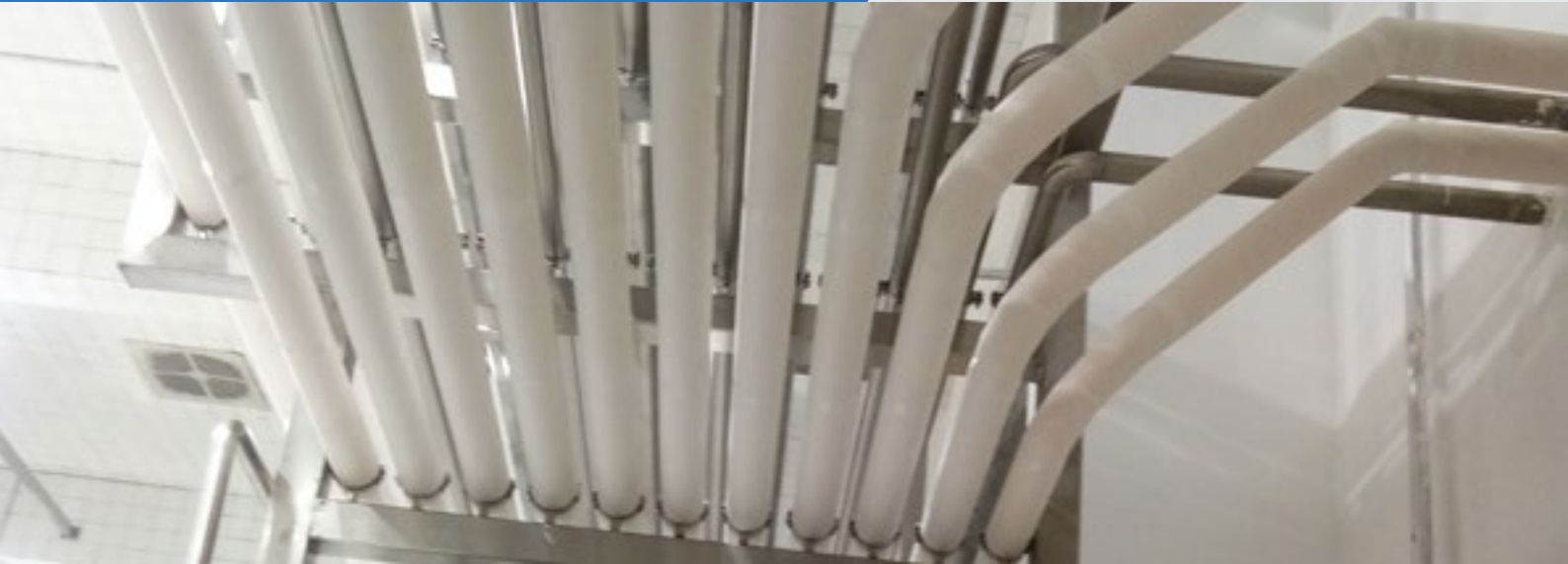


# T-FIT<sup>®</sup> Hygiene

Condensation control in  
cleanroom environments

**T-FIT<sup>®</sup>**  
INSULATION

**Fit** to perform. **Fit** to last



T-FIT<sup>®</sup> Hygiene insulation is developed from Zotefoams' ZOTEK<sup>®</sup> F 42 HT LS PVDF closed cell foam, a material which has numerous benefits when it comes to insulation, especially within food and beverage, dairy and other aseptic, sterile environments.

## Introduction

As cold pipe work is susceptible to condensation forming on its surface - this occurs if the surface temperature of the pipe falls below the dew point of its environment - formation of condensation in clean manufacturing facilities can lead to contamination of the environment and compromise the quality of products being produced, so must be avoided. Therefore, the thickness of T-FIT Hygiene insulation can have a significant impact on the ability to prevent condensation build up.

This application profile outlines information regarding the thickness of T-FIT Hygiene insulation that is predicted to prevent condensation formation on cold pipework for a selection of different pipe temperatures and ambient conditions.

The information is generated by theoretical calculation and is provided only as a guide for installation in typical cleanroom environments where condensation control is required.

T-FIT Hygiene can be supplied in 12.7mm wall thickness and is the basis on which the information below is generated. The data tables show predictions for a 1" ASME pipe (Pipe OD = 25.4 mm).

Please contact the T-FIT sales team for further information and estimates to satisfy alternative environmental conditions or pipe sizes.

**Relative humidity: 30% Pipe OD 25mm**

Pipe temperature	-80	-50	-25	-20	-15	-10	-5	0	5	10	15	20
Ambient temperature	Thickness of T-FIT® Hygiene required to prevent condensation (mm)											
5	9	5.4	2.1	1.4	0.6	0.1	0.1	0.1	0.1	0.1	0.1	0.1
10	9.2	5.8	2.6	2	1.3	0.5	0.1	0.1	0.1	0.1	0.1	0.1
15	9.4	6.1	3.1	2.5	1.8	1.2	0.4	0.1	0.1	0.1	0.1	0.1
20	9.6	6.4	3.6	3	2.3	1.7	1	0.4	0.1	0.1	0.1	0.1
25	9.8	6.7	4	3.4	2.8	2.2	1.6	0.9	0.3	0.1	0.1	0.1
30	9.9	7	4.4	3.8	3.2	2.7	2.1	1.5	0.8	0.2	0.1	0.1
35	10.1	7.2	4.7	4.2	3.6	3.1	2.5	1.9	1.4	0.8	0.1	0.1

**Relative humidity: 40% Pipe OD 25mm**

Pipe temperature	-80	-50	-25	-20	-15	-10	-5	0	5	10	15	20
Ambient temperature	Thickness of T-FIT® Hygiene required to prevent condensation (mm)											
5	11.6	7.3	3.3	2.4	1.5	0.6	0.1	0.1	0.1	0.1	0.1	0.1
10	11.9	7.8	4	3.1	2.3	1.4	0.5	0.1	0.1	0.1	0.1	0.1
15	12.2	8.2	4.5	3.8	3	2.1	1.3	0.4	0.1	0.1	0.1	0.1
20	12.4	8.5	5.1	4.3	3.6	2.8	2	1.2	0.3	0.1	0.1	0.1
25	12.6	8.9	5.6	4.9	4.2	3.4	2.7	1.9	1.1	0.2	0.1	0.1
30		9.2	6	5.4	4.7	4	3.2	2.5	1.8	1	0.1	0.1
35		9.5	6.4	5.8	5.1	4.5	3.8	3.1	2.4	1.7	0.9	0.1

**Relative humidity: 50% Pipe OD 25mm**

Pipe temperature	-80	-50	-25	-20	-15	-10	-5	0	5	10	15	20
Ambient temperature	Thickness of T-FIT® Hygiene required to prevent condensation (mm)											
5		9.7	4.8	3.7	2.6	1.4	0.2	0.1	0.1	0.1	0.1	0.1
10		10.3	5.6	4.6	3.6	2.5	1.3	0.1	0.1	0.1	0.1	0.1
15		10.8	6.3	5.4	4.4	3.4	2.3	1.2	0.1	0.1	0.1	0.1
20		11.2	7	6.1	5.2	4.2	3.2	2.2	1.1	0.1	0.1	0.1
25		11.7	7.6	6.7	5.8	4.9	4	3	2.1	1	0.1	0.1
30		12.1	8.1	7.3	6.5	5.6	4.7	3.8	2.9	2	0.9	0.1
35		12.4	8.7	7.9	7.1	6.2	5.4	4.5	3.8	2.8	1.9	0.8

**Relative humidity: 60% Pipe OD 25mm**

Pipe temperature	-80	-50	-25	-20	-15	-10	-5	0	5	10	15	20
Ambient temperature	Thickness of T-FIT® Hygiene required to prevent condensation (mm)											
5			6.9	5.5	4.1	2.6	1	0.1	0.1	0.1	0.1	0.1
10			7.9	6.6	5.3	3.9	2.5	0.9	0.1	0.1	0.1	0.1
15			8.8	7.6	6.4	5.1	3.7	2.3	0.8	0.1	0.1	0.1
20			9.6	8.5	7.3	6.1	4.9	3.6	2.2	0.7	0.1	0.1
25			10.4	9.3	8.2	7	5.9	4.7	3.4	2.1	0.6	0.1
30			11.1	10	9	7.9	6.8	5.6	4.6	3.3	2	0.5
35			11.7	10.7	9.7	8.7	7.6	6.5	5.6	4.4	3.2	1.9

**Relative humidity: 70% Pipe OD 25mm**

Pipe temperature	-80	-50	-25	-20	-15	-10	-5	0	5	10	15	20
Ambient temperature	Thickness of T-FIT® Hygiene required to prevent condensation (mm)											
5			10.1	8.3	6.4	4.5	2.4	0.1	0.1	0.1	0.1	0.1
10			11.4	9.7	8	6.2	4.3	2.2	0.1	0.1	0.1	0.1
15			12.6	11	9.4	7.7	5.9	4.1	2.1	0.1	0.1	0.1
20				12.1	10.6	9	7.4	5.7	3.9	2	0.1	0.1
25					11.8	10.3	8.7	7.1	5.5	3.8	1.9	0.1
30						11.4	9.9	8.4	7	5.4	3.7	1.8
35						12.4	11	9.6	8.4	6.9	5.3	3.6

**Relative humidity: 80% Pipe OD 25mm**

Pipe temperature	-80	-50	-25	-20	-15	-10	-5	0	5	10	15	20
Ambient temperature	Thickness of T-FIT® Hygiene required to prevent condensation (mm)											
5					10.6	7.8	4.8	1.5	0.1	0.1	0.1	0.1
10						10.2	7.5	4.6	1.3	0.1	0.1	0.1
15						12.4	9.9	7.2	4.4	1.2	0.1	0.1
20							12	9.5	7	4.2	1.1	0.1
25								11.6	9.3	6.8	4.1	1
30									11.5	9.2	6.7	4
35										11.3	9	6.6

### Exclusion of Liability

Any information contained in this document is, to the best of the knowledge and belief of Zotefoams plc and of Zotefoams Inc. (together herein referred to as ZOTEFOAMS), accurate. Any liability on the part of ZOTEFOAMS or any subsidiary or holding company of ZOTEFOAMS for any loss, damage, costs or expenses directly or indirectly arising out of the use of such information or the use, application, adaptation or processing of any goods, materials or products described herein is, save as provided in ZOTEFOAMS' conditions of sale ("Conditions of Sale"), hereby excluded to the fullest extent permitted by law.

Where ZOTEFOAMS' goods or materials are to be used in conjunction with other goods or materials, it is the responsibility of the user to obtain from the manufacturers or suppliers of the other goods or materials all technical data and other properties relating to those other goods or materials. Save as provided in the Conditions of Sale no liability can be accepted in respect of the use of ZOTEFOAMS' goods or materials in conjunction with any other goods or materials.

Where ZOTEFOAMS' goods or materials are likely to come into contact with foodstuffs or pharmaceuticals, whether directly or indirectly, or are likely to be used in the manufacture of toys, prior written confirmation of compliance with relevant legislative or regulatory standards for those applications may be requested from ZOTEFOAMS, if appropriate. Save as provided in the Conditions of Sale no liability can be accepted for any damage, loss or injury directly or indirectly arising out of any failure by the user to obtain such confirmation or to observe any recommendations given by or on behalf of ZOTEFOAMS.

ZOTEFOAMS MAKES NO WARRANTIES EXPRESS OR IMPLIED, EXCEPT TO THE EXTENT SET OUT IN THE CONDITIONS OF SALE, AND HEREBY SPECIFICALLY EXCLUDES ANY IMPLIED WARRANTY OF MERCHANTABILITY OR FITNESS FOR A PARTICULAR PURPOSE WITH RESPECT TO ANY GOODS, MATERIALS OR PRODUCTS DESCRIBED HEREIN.

Zotefoams plc Management systems are covered by the following:



**Quality**  
FM 01870  
ISO 9001:2015



**Safety**  
OHS 52538  
ISO 45001: 2018



**Environment**  
EMS 36270  
ISO 14001:2015

#### Zotefoams plc

675 Mitcham Road  
Croydon  
Surrey  
CR9 3AL  
United Kingdom

Tel: +44 (0) 20 8664 1600  
Email: t-fitsales@zotefoams.com

#### T-FIT Insulation Solutions India Private Limited

810 Shapath V, S.G. Highway  
Ahmedabad  
Gujarat  
380015

Tel: +91 (0) 7433946464  
Email: t-fitindia@zotefoams.com

#### Zotefoams T-FIT Material Technology (Kunshan) Co., Ltd

181 Huanlou Road  
Development Zone,  
Kunshan City,  
Jiangsu Pr.  
China 215333

Tel: +86 (0)512 5012 6001-8001  
Email: t-fitchina@zotefoams.com

#### Zotefoams Inc.

55 Precision Drive  
Walton KY  
41094 USA

Tel: +1 (0) 859 371 4025  
Free: (800) 362-8358 (US Only)  
Email: t-fitusa@zotefoams.com

T-FIT® and ZOTEK® are registered trademarks of Zotefoams plc. Kynar® is a registered trademark of Arkema Inc. All rights reserved

Issue 1  
September 2021

If you would like more information visit our website [www.zotefoams.com](http://www.zotefoams.com)