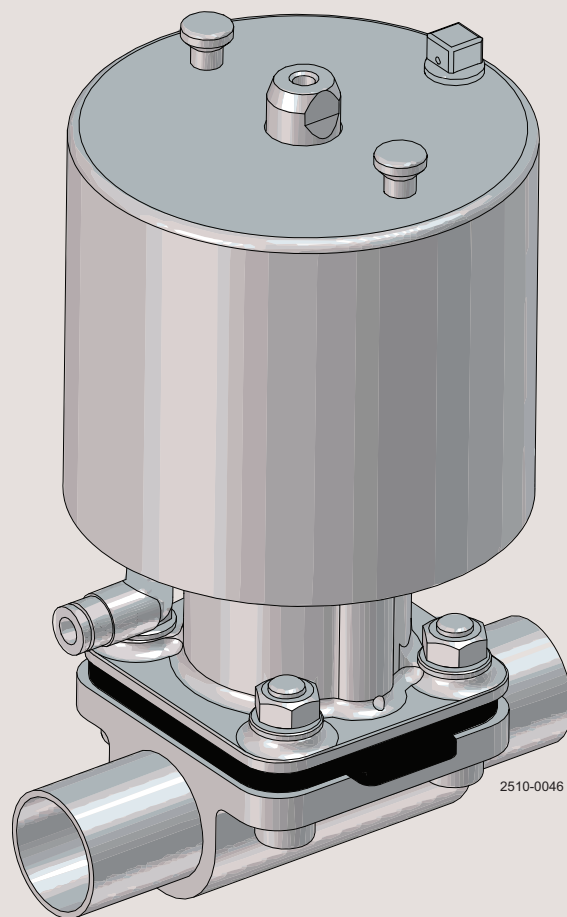




Spare Parts

Unique DV-ST UltraPure



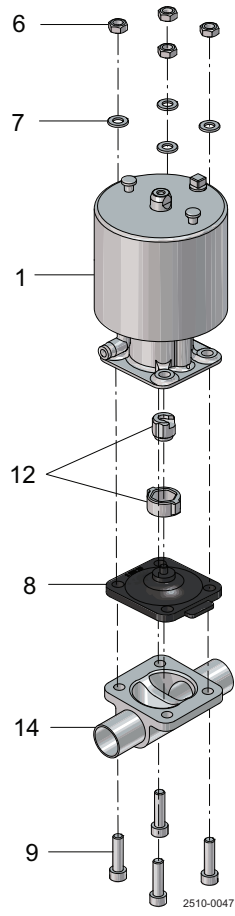
ESE02017-EN13 2017-05

Original manual

Table of contents

The information herein is correct at the time of issue but may be subject to change without prior notice

1. Actuator	4
2. Handles	8



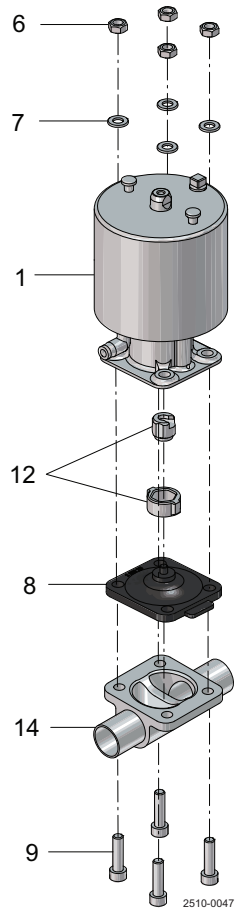
Actuator

Pos	Qty	Denomination	DN8 - 1/4"	*DN10 - 3/8"	DN20 - 3/4"
			*DN10 - 3/8"	DN15 - 1/2"	
Sizes DN8-DN10 / 2-way valves					
1	1	Actuator, SS NC	9615299901		
	1	Actuator, SS NO	9615299902		
	1	Actuator, SS A/A	9615299903		
Sizes DN8-DN10 / T-, TO- and block valves					
	1	Actuator, SS NC	9615299907		
	1	Actuator, SS NO	9615299908		
	1	Actuator, SS A/A	9615299909		
Size DN15					
	1	Actuator, SS NC		9615300001	
	1	Actuator, SS NO		9615300002	
	1	Actuator, SS A/A		9615300003	
Size DN20					
	1	Actuator, SS NC			9615303201
	1	Actuator, SS NO			9615303202
	1	Actuator, SS A/A			9615303203
8	1	Diaphragm, EPDM	9615000101	9615000103	9615000104
	1	Diaphragm, PTFE/EPDM	N/A	9615000154	9615000155
	1	Diaphragm, TFM/EPDM	N/A	9615000136	9615000137
	1	Diaphragm, TFM/EPDM point-fixed	9615000134	9615005270	9615005271
For 2-way valve					
9+6+7	1	Nut, washer, screw set	9615353601	9615353602	9615353603
For T-, TO- and block valve					
	1	Nut, washer, screw set	9615353609	9615353610	9615353611
Compressor kit					
12	1	Compressor kit			
	1	Button	9614278701	9615005184	9615005186
	1	Bayonet	N/A	9615005203	9615005205
	1	Thread	N/A	9615005204	9615005206
14	1	Valve body, please refer to Configurator in AL Anytime			

* For valves DN10 please check marking on diaphragm for actual actuator size of the diaphragm (DN8 or DN15).

For parts to DN10 please note: ISO 1127 - DN10 - are made from valve body DN15. Other standards - DN10 - are made from valve body DN8.

For T-Valve select actuator Actuator size based on outlet dimension.



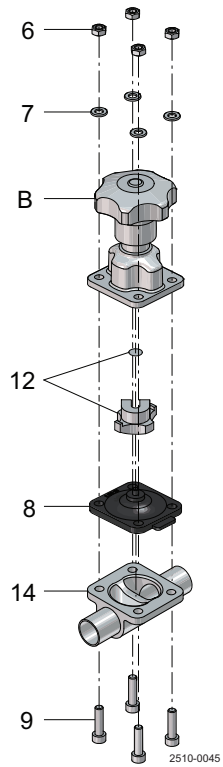
Actuator

Pos	Qty	Denomination	DN25 - 1"	*DN32 - 1 1/4"		DN50 - 2"	DN65 - 2 1/2"	DN80 - 3"
			*DN32 - 1 1/4"	DN40 - 1 1/2"				
Size DN25								
1	1	Actuator, SS NC	9615303301					
	1	Actuator, SS NO	9615303302					
	1	Actuator, SS A/A	9615303303					
Size DN40								
	1	Actuator, SS NC		9615303801				
	1	Actuator, SS NO		9615303802				
	1	Actuator, SS A/A		9615303803				
Size DN50								
	1	Actuator, SS NC			9615303901			
	1	Actuator, SS NO			9615303902			
	1	Actuator, SS A/A			9615303903			
Size DN65								
	1	Actuator, SS NC				9615304401		
	1	Actuator, SS NO				9615304402		
	1	Actuator, SS A/A				9615304403		
Size DN80								
	1	Actuator, SS NC						9615304501
	1	Actuator, SS NO						9615304502
	1	Actuator, SS A/A						9615304503
8	1	Diaphragm, EPDM	9615000105	9615000107	9615000108	9615000109	9615000110	
	1	Diaphragm, PTFE/EPDM	9615000156	9615000158	9615000159	9615000160	9615000161	
	1	Diaphragm, TFM/EPDM	9615000138	9615000140	9615000141	9615000142	9615000143	
	1	Diaphragm, TFM/EPDM point-fixed	9615005272	9615005273	9615005274	9615005275	9615005276	
For 2-way valve								
9+6+7	1	Nut, washer, screw set	9615353604	9615353605	9615353606	9615353607	9615353608	
For T-, TO- and block valve								
	1	Nut, washer, screw set	9615353612	9615353613	9615353614	9615353615	9615353616	
Compressor kit								
12	1	Compressor kit						
	1	Bayonet	9615005208	9615005223	9615005224	9615005226	9615005228	
	1	Thread	9615005207	9615005209	9615005222	9615005225	9615005227	
14	1	Valve body, please refer to Configurator in AL Anytime						

* For valves DN 32 please check marking on diaphragm for actual actuator size of the diaphragm (DN 25 or DN 40).

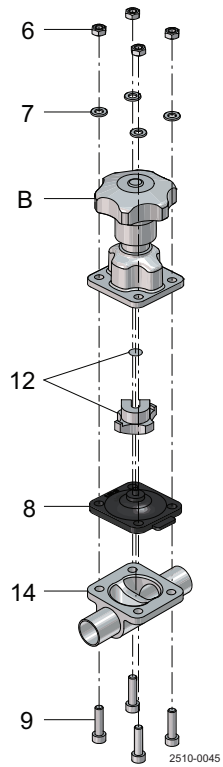
For parts to DN32 please note: ISO 1127 - DN32 - are made from valve body DN40. DN11866 - DN32 - are made from valve body DN25.

For T-Valve select actuator Actuator size based on outlet dimension.



Handles

Pos	Qty	Denomination	DN8 - 1/4"	*DN10 - 3/8"	DN20 - 3/4"
			*DN10 - 3/8"	DN15 - 1/2"	
Handle, complete EPDM diaphragm					
B	1	Handle, complete, C/C			
	1	Handle, std.	N/A	9614136301	9614136401
	1	Upgrade kit to lockable version	N/A	9614167653	9614167653
B	1	Handle, complete, C/SS			
	1	Optical	9614146501	9614135501	9614135601
B	1	Handle, complete, SS/SS			
	1	Handle, std.	9614134601	9614134801	9614134901
Handle, complete PTFE/EPDM and TFM/EPDM diaphragm					
B	1	Handle, complete, C/C			
	1	Handle, std.	N/A	9614136801	9614136901
	1	Upgrade kit to lockable version	N/A	9614167653	9614167653
B	1	Handle, complete, C/SS			
	1	Optical	N/A	9614149301	9614149401
B	1	Handle, complete SS/SS			
	1	Handle, std.	N/A	9614147601	9614147701
Handle, complete TFM/EPDM point-fixed diaphragm					
B	1	Handle, complete, C/C			
	1	Handle, std.	N/A	N/A	N/A
	1	Upgrade kit to lockable version	N/A	N/A	N/A
B	1	Handle, complete, C/SS			
	1	Optical	9614146501	9614145001	9614104601
B	1	Handle, complete, SS/SS			
	1	Handle, std.	9614134601	9614149101	9614149201

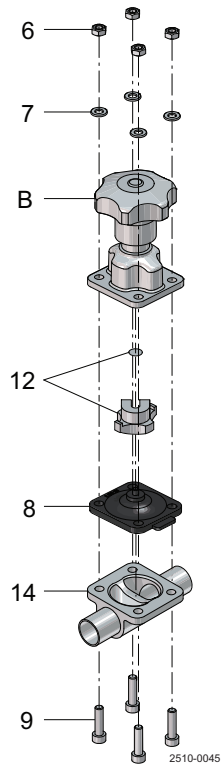


Handles

Pos	Qty	Denomination	DN8 - 1/4"	*DN10 - 3/8"	DN20 - 3/4"	
			*DN10 - 3/8"	DN15 - 1/2"		
8	1	Diaphragm, EPDM	9615000101	9615000103	9615000104	
	1	Diaphragm, PTFE/EPDM	N/A	9615000154	9615000155	
	1	Diaphragm, TFM/EPDM	N/A	9615000136	9615000137	
	1	Diaphragm, TFM/EPDM point-fixed	9615000134	9615005270	9615005271	
For 2-way valve						
9+6+7	1	Nut, washer, screw set , EPDM - C/C	N/A	9615005356	9615005356	
	1	Nut, washer, screw set , EPDM - C/SS + SS/SS	9615005350	9615005351	9615005351	
	1	Nut, washer, screw set , PTFE/EPDM + TFM/EPDM - C/C	N/A	9615005356	9615005356	
	1	Nut, washer, screw set , PTFE/EPDM + TFM/EPDM - C/SS + SS/SS	N/A	9615005351	9615005351	
	1	Nut, washer, screw set , TFM/EPDM point-fixed - C/C	N/A	9615005356	9615005356	
	1	Nut, washer, screw set , TFM/EPDM point-fixed - C/SS + SS/SS	9615005350	9615005351	9615005351	
	For T-, TO- and block valve					
	1	1	Nut, washer, screw set , EPDM - C/C	N/A	9615005341	9615005341
1		Nut, washer, screw set , EPDM - C/SS + SS/SS	9615005343	9615005342	9615005342	
1		Nut, washer, screw set , PTFE/EPDM + TFM/EPDM - C/C	N/A	9615005341	9615005341	
1		Nut, washer, screw set , PTFE/EPDM + TFM/EPDM - C/SS + SS/SS	N/A	9615005342	9615005342	
1		Nut, washer, screw set , TFM/EPDM point-fixed - C/C	N/A	9615005341	9615005341	
1		Nut, washer, screw set , TFM/EPDM point-fixed - C/SS + SS/SS	9615005343	9615005342	9615005342	
Compressor kit						
12		1	Compressor kit			
	1	Button	9614278701	9615005288	9615005289	
	1	Bayonet	N/A	9615005296	9615005297	
	1	Thread	N/A	9615005304	9615005305	
14	1	Valve body, please refer to Configurator in AL Anytime				

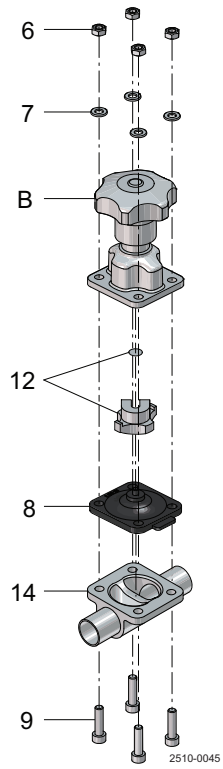
* For valves DN10 please check marking on diaphragm for actual size of the diaphragm (DN8 or DN15).

For parts to DN10 please note: ISO 1127 - DN10 - are made from valve body DN15. Other standards - DN10 - are made from valve body DN8.



Handles

Pos	Qty	Denomination	DN25 - 1"	*DN32 - 1 1/4"		DN50 - 2"	DN65 - 2 1/2"	DN80 - 3"
			*DN32 - 1 1/4"	DN40 - 1 1/2"				
Handle, complete EPDM diaphragm								
B	1	Handle, complete, C/C***						
	1	Handle, std.	9614136501	9614136601	9614136701	N/A	N/A	
	1	Upgrade kit to lockable version	9614167653	9614167653	9614167653	N/A	N/A	
B	1	Handle, complete, C/SS						
	1	Optical	9614135701	9614135801	9614135901	9614136001	9614136101	
B	1	Handle, complete, SS/SS						
	1	Handle, std.	9614135001	9614135101	9614135201	9614135301	9614135401	
Handle, complete PTFE/EPDM + TFM/EPDM diaphragm								
B	1	Handle, complete, C/C						
	1	Handle, std.	9614137001	9614137101	9614137201	N/A	N/A	
	1	Upgrade kit to lockable version	9614167653	9614167653	9614167653	N/A	N/A	
B	1	Handle, complete, C/SS						
	1	Optical	9614149501	9614149601	9614149701	9614149801	9614149901	
B	1	Handle, complete, SS/SS						
	1	Handle, std.	9614147801	9614147901	9614148001	9614148101	9614148201	
Handle, complete TFM/EPDM point-fixed diaphragm								
B	1	Handle, complete, C/C						
	1	Handle, std.	9614136501	9614136601	9614136701	N/A	N/A	
	1	Upgrade kit to lockable version	9614167653	9614167653	9614167653	N/A	N/A	
B	1	Handle, complete, C/SS						
	1	Optical	9614135701	9614135801	9614135901	9614136001	9614136101	
B	1	Handle, complete, SS/SS						
	1	Handle, std.	9614135001	9614135101	9614135201	9614135301	9614135401	



Handles

Pos	Qty	Denomination	DN25 - 1"	*DN32 - 1 1/4"		DN50 - 2"	DN65 - 2 1/2"	DN80 - 3"	
			*DN32 - 1 1/4"	DN40 - 1 1/2"					
8	1	Diaphragm, EPDM	9615000105	9615000107	9615000108	9615000109	9615000110		
	1	Diaphragm, PTFE/EPDM	9615000156	9615000158	9615000159	9615000160	9615000161		
	1	Diaphragm, TFM/EPDM	9615000138	9615000140	9615000141	9615000142	9615000143		
	1	Diaphragm, TFM/EPDM point-fixed	9615005272	9615005273	9615005274	9615005275	9615005276		
For 2-way valve									
9+6+7	1	Nut, washer, screw set , EPDM - C/C	9615005358	9615005345	9615005347	N/A	N/A		
	1	Nut, washer, screw set , EPDM - C/SS + SS/SS	9615005352	9615005348	9615005353	9615005354	9615005344		
	1	Nut, washer, screw set , PTFE/EPDM + TFM/EPDM - C/C	9615005358	9615005345	9615005347	N/A	N/A		
	1	Nut, washer, screw set , PTFE/EPDM + TFM/EPDM - C/SS + SS/SS	9615005352	9615005353	9615005345	9615005354	9615005355		
	1	Nut, washer, screw set , TFM/EPDM point-fixed - C/C	9615005358	9615005345	9615005347	N/A	N/A		
	1	Nut, washer, screw set , TFM/EPDM point-fixed - C/SS + SS/SS	9615005352	9615005348	9615005353	9615005354	9615005344		
	For T-, TO- and block valve								
	1	1	Nut, washer, screw set , EPDM - C/C	9615005339	9615005336	9615005336	N/A	N/A	
1		Nut, washer, screw set , EPDM - C/SS + SS/SS	9615005340	9615005338	9615005338	9615005333	9615005332		
1		Nut, washer, screw set , PTFE/EPDM + TFM/EPDM - C/C	9615005339	9615005336	9615005336	N/A	N/A		
1		Nut, washer, screw set , PTFE/EPDM + TFM/EPDM - C/SS + SS/SS	9615005340	9615005338	9615005338	9615005333	9615005332		
1		Nut, washer, screw set , TFM/EPDM point-fixed - C/C	9615005339	9615005336	9615005336	N/A	N/A		
1		Nut, washer, screw set , TFM/EPDM point-fixed - C/SS + SS/SS	9615005340	9615005338	9615005338	9615005333	9615005332		
Compressor kit									
12		1	Compressor kit						
	1	Bayonet	9615005298	9615005299	9615005300	9615005226	9615005228		
	1	Thread	9615005290	9615005291	9615005292	9615005225	9615005227		
14	1	Valve body, please refer to Configurator in AL Anytime							

* For valves DN 32 please check marking on diaphragm for actual size of the diaphragm (DN 25 or DN 40).

For parts to DN32 please note: ISO 1127 - DN32 - are made from valve body DN40. DN11866 - DN32 - are made from valve body DN25.

How to contact Alfa Laval

Contact details for all countries are continually updated on our website.

Please visit www.alfalaval.com to access the information directly.

© Alfa Laval Corporate AB

This document and its contents is owned by Alfa Laval Corporate AB and protected by laws governing intellectual property and thereto related rights. It is the responsibility of the user of this document to comply with all applicable intellectual property laws. Without limiting any rights related to this document, no part of this document may be copied, reproduced or transmitted in any form or by any means (electronic, mechanical, photocopying, recording, or otherwise), or for any purpose, without the expressed permission of Alfa Laval Corporate AB. Alfa Laval Corporate AB will enforce its rights related to this document to the fullest extent of the law, including the seeking of criminal prosecution.