



# Thermometers for sanitary use

## Alfa Laval Thermometers

### Application

The Alfa Laval thermometer is designed to fulfil the demands of local temperature indication in sanitary and pharmaceutical production. Main features are: Hygienic connection and robust design, high resistance to corrosion, damp, vibrations and wear. Accurate and long term measurement stability with quick response time. Due to their first class accuracy and long term measurement stability, no yearly calibration is needed. Available in two sizes.

### Standard range

Our standard range comes with a liquid-filled housing. It includes an 80 or 100 mm diameter dial and built-in temperature compensator. The housing is made of stainless steel (AISI 304) and the clamp connection and sensor tube is made of stainless steel (AISI 316). As an option, it can be delivered electropolished and with 3A, 3.1 or calibration certificate.



### TECHNICAL DATA

Accuracy: . . . . . Class 1.0  
Dial size: . . . . . 80 mm, 100 mm

### Measuring ranges

- 0 to 60°C
- 0 to 100°C
- 0 to 120°C
- 0 to 160°C
- 0 to 200°C
- 20 to 120°C

### Working principle

The function is based on expansion of the filling medium in the closed sensor. The change of pressure actuates the spiral spring driving the dial movement. A built-in bimetallic coil compensates automatically for the effect on the reading caused by change of the ambient temperature. The filling media is an inert gas which is 100% neutral to the environment. This makes the thermometer ideal for use in food and pharmaceutical industries.

### Certificates

- FDA conformity declaration (option)
- Calibration certificate (option)
- 3.1 certificate (option)

### PHYSICAL DATA

Sensor length (L): . . . . . From 50 mm to 300 mm

### Materials

Wetted parts: . . . . . AISI 316  
Casing: . . . . . AISI 304  
Glass: . . . . . 4 mm thick glass

### Filling

Sensor tube: . . . . . Inert FDA approved gas  
Housing: . . . . . FDA approved silicone oil

### Weight

Thermometer with diaphragm: . . . . . Approx. 1.5 kg

### Process connections

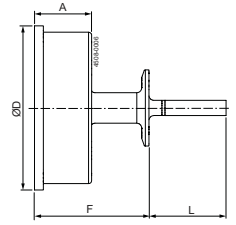
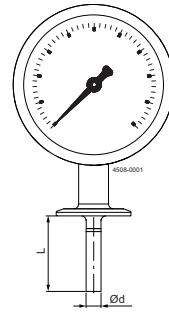
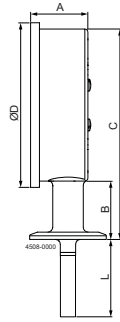
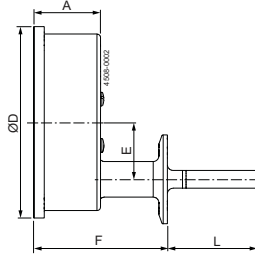
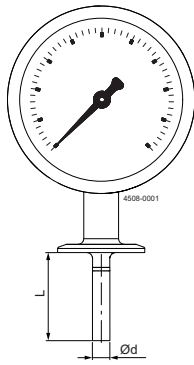
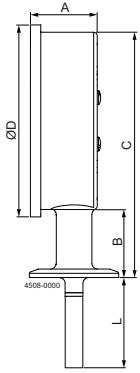
Clamp DN38 (ISO2852) / Clamp DN40 (DIN32676)  
Clamp DN50 (ISO2852) / Clamp DN51 (DIN32676)

### Operating temperature

Wetted parts: . . . . . up to 250°C  
Casing: . . . . . -40 to 100°C



## Dimensions (mm)



Clamp DN38 (ISO2852) /  
Clamp DN40 (DIN32676)  
TE67Dx1xxx1xxx

Clamp DN38 (ISO2852) /  
Clamp DN40 (DIN32676)  
TE67Dx1xxx1xxx

Clamp DN38 (ISO 2852) /  
Clamp DN40 (DIN32676)  
TE67Dx1xxx2xxx

Clamp DN38 (ISO2852) /  
Clamp DN40 (DIN32676)  
TE67Dx1xxx1xxx

Clamp DN38 (ISO2852) /  
Clamp DN40 (DIN32676)  
TE67Dx1xxx1xxx

Clamp DN38 (ISO 2852) /  
Clamp DN40 (DIN32676)  
TE67Dx1xxx2xxx

	A	B	C	ØD	ød	E	F
100 mm	38	38	137	108	10	32	76
80 mm	41	37.5	115.5	86	10	0	60

Alfa Laval reserves the right to change specifications without prior notification. ALFA LAVAL is a trademark registered and owned by Alfa Laval Corporate AB.

ESE01615EN 1511

© Alfa Laval

### How to contact Alfa Laval

Contact details for all countries are continually updated on our website. Please visit [www.alfalaval.com](http://www.alfalaval.com) to access the information direct.