

Sanitary Proportional-Controlled Valve with Positioner Type SPC-1

Actuator			38mm	51mm	63.5mm	76mm	NW80	101.6mm
Pos.	Qty.	Denomination	NW40	NW50	NW65			NW100
		Actuator complete .. NO	31353-1154-4	31353-1154-4	31353-1154-4	31353-1227-4	31353-1227-4	31353-1227-4
		Actuator complete .. NC	31353-1154-3	31353-1154-3	31353-1154-3	31353-1227-3	31353-1227-3	31353-1227-3
1	1	Valve positioner	31353-1152-1	31353-1152-1	31353-1152-1	31353-1152-1	31353-1152-1	31353-1152-1
1	1	Valve positioner	31353-1151-1	31353-1151-1	31353-1151-1	31353-1151-1	31353-1151-1	31353-1151-1
2	1	Air fitting	9611-99-3068	9611-99-3068	9611-99-3068	9611-99-3068	9611-99-3068	9611-99-3068
3	2	Air fitting	9611-99-3069	9611-99-3069	9611-99-3069	9611-99-3069	9611-99-3069	9611-99-3069
4	1	Spring support	31353-1145-1	31353-1145-1	31353-1145-1	31353-1145-1	31353-1145-1	31353-1145-1
5Δ	1	O-ring	9611-99-0038	9611-99-0038	9611-99-0038	9611-99-0038	9611-99-0038	9611-99-0038
6Δ	2	O-ring	223406-25	223406-25	223406-25	223406-25	223406-49	223406-49
7	1	Cylinder	31353-1148-2	31353-1148-2	31353-1148-2	31353-1228-2	31353-1228-2	31353-1228-2
8Δ	1	O-ring	223401-74	223401-74	223401-74	223401-75	223401-75	223401-75
9	1	Piston	31353-0621-1	31353-0621-1	31353-0621-1	31353-0619-1	31353-0619-1	31353-0619-1
10Δ	1	Lock wire	31353-0151-1	31353-0151-1	31353-0151-1	31353-0189-1	31353-0189-1	31353-0189-1
11Δ	1	Clip complete	31353-0793-1	31353-0793-1	31353-0793-1	31353-0793-2	31353-0793-2	31353-0793-2
12	1	Spring assembly	31353-0625-1	31353-0625-1	31353-0625-1	31353-0622-1	31353-0622-1	31353-0622-1
13Δ	1	O-ring	223406-67	223406-67	223406-67	223406-17	223406-17	223406-17
14	1	Bonnet	31353-0133-1	31353-0133-1	31353-0133-1	31353-0190-1	31353-0190-1	31353-0190-1
15	1	Prop	31353-0154-1	31353-0154-1	31353-0154-1	31353-0154-1	31353-0154-1	31353-0154-1
16	1	Air fitting	9611-99-1988	9611-99-1988	9611-99-1988	9611-99-1988	9611-99-1988	9611-99-1988
Δ		Service kit for actuator	9611-92-0300	9611-92-0300	9611-92-0300	9611-92-0319	9611-92-0319	9611-92-0319

Parts marked with Δ are included in the **service kits**.

Valve body part

Pos.	Qty.	Denomination	38mm	51mm	63.5mm	76mm	NW80	101.6mm
			NW40	NW50	NW65			NW100
17♦	1	Lip seal	31353-0155-1	31353-0155-1	31353-0155-1	31353-0188-1	31353-0188-1	31353-0188-1
	1	Lip seal	31353-0155-2	31353-0155-2	31353-0155-2	31353-0188-2	31353-0188-2	31353-0188-2
	1	Lip seal	31353-0155-3	31353-0155-3	31353-0155-3	31353-0188-3	31353-0188-3	31353-0188-3
18	1	Plug complete	31353-0520-1	31353-0521-1	31353-0522-1	31353-0523-1	31353-0523-4	31353-0524-1
	1	Plug complete	31353-0520-2	31353-0521-2	31353-0522-2	31353-0523-2	31353-0523-5	31353-0524-2
	1	Plug complete	31353-0520-3	31353-0521-3	31353-0522-3	31353-0523-3	31353-0523-6	31353-0524-3
a	1	Plug	31353-0340-1	31353-0377-1	31353-0378-1	31353-0341-1	31353-0341-2	31353-0379-1
b♦	1	Seal	31353-0320-1	31353-0321-1	31353-0322-1	31353-0324-1	9612-0950-01	31353-0325-1
	1	Seal	31353-0320-2	31353-0321-2	31353-0322-2	31353-0324-2	9612-0950-02	31353-0325-2
	1	Seal	31353-0320-3	31353-0321-3	31353-0322-3	31353-0324-3	9612-0950-03	31353-0325-3
	1	Packing	31353-1211-1	31353-1212-1	31353-1213-1	31353-1214-1	31353-1225-1	31353-1215-1
c	1	Plug head	31353-0515-1	31353-0516-1	31353-0517-1	31353-0518-1	9612-0985-01	31353-0519-1
d♦	1	O-ring	990034-01	990034-01	990034-01	990034-01	990034-01	990034-01
	1	O-ring	223404-21	223404-21	223404-21	223404-21	223404-21	223404-21
	1	O-ring	223404-35	223404-35	223404-35	223404-35	223404-35	223404-35
	1	Seal-ring	9612-4330-01	9612-4330-01	9612-4330-01	9612-4330-01	9612-4330-01	9612-4330-01
e	1	Screw	31353-0514-1	31353-0514-1	31353-0514-1	31353-0514-1	31353-0514-1	31353-0514-1
Clamp								
19	1	Clamp complete	31320-0027-3	31320-0027-3	31320-0027-3	31320-0027-5	31320-0027-5	31320-0027-5
Valve body								
20	1	Valve body	31353-0375-1	31353-0376-1	31353-0380-1	31353-0381-1		31353-0026-1
	1	Valve body	9612-0940-01	9612-0941-01	9612-0942-01		9612-0943-01	9612-0944-01
Alternative for 38 mm plug								
18c	1	Plug head	31353-0532-1					
18e	1	Screw	31353-0514-2					
♦		Service kit EPDM	9611-92-0010	9611-92-0013	9611-92-0016	9611-92-0019	9611-92-0105	9611-92-0022
♦		Service kit NBR	9611-92-0011	9611-92-0014	9611-92-0017	9611-92-0020	9611-92-0106	9611-92-0023
♦		Service kit FPM	9611-92-0012	9611-92-0015	9611-92-0018	9611-92-0021	9611-92-0107	9611-92-0024

Parts marked with ♦ are included in the **service kits**.

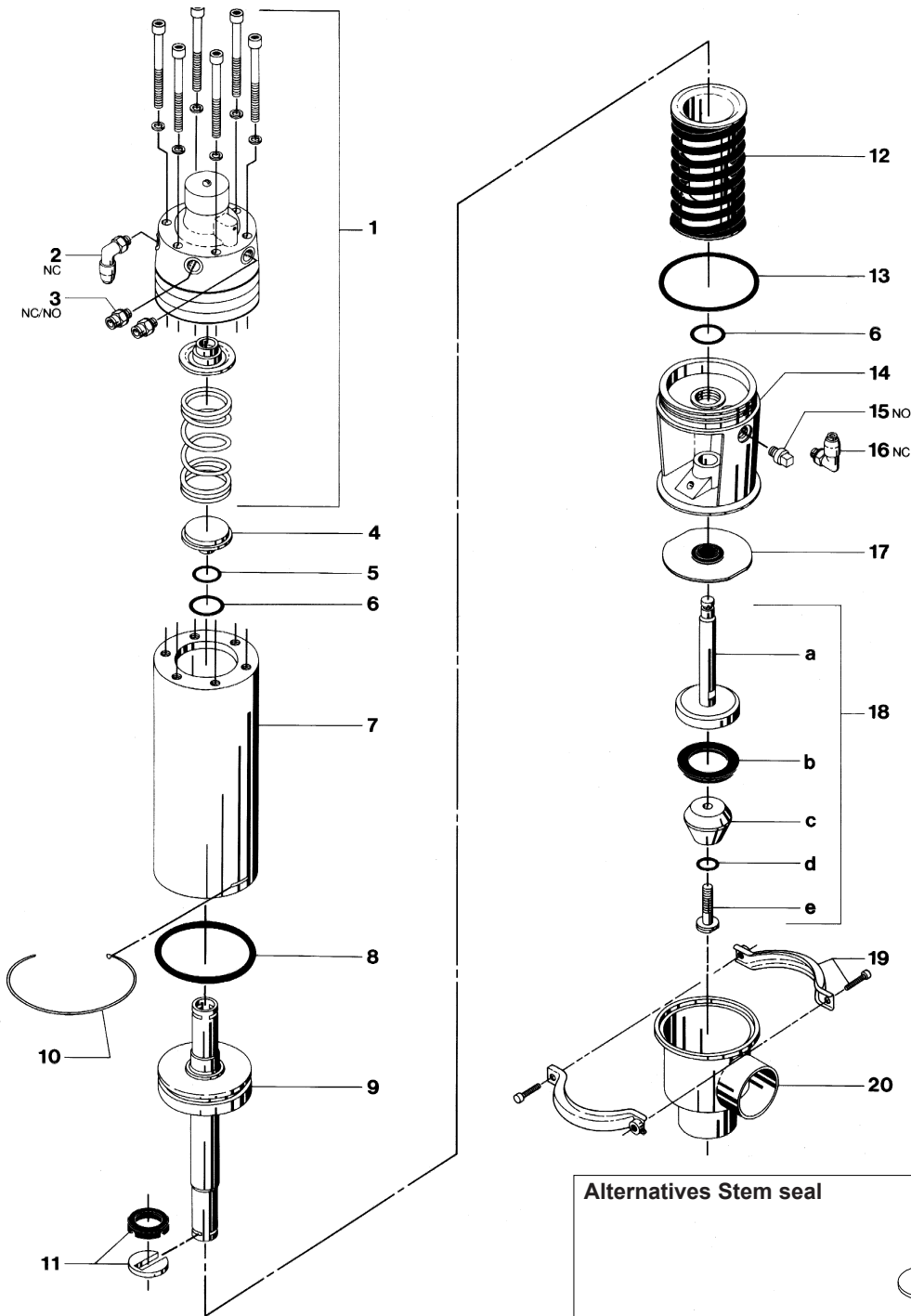
Pos.	Qty.	Denomination	38mm	51mm	63.5mm	76mm	NW80	101.6mm
			NW40	NW50	NW65			NW100
Valve Body with 0.8 RA finish inside								
10	1	Valve body	31353-0375-2	31353-0376-2	31353-0380-2	31353-0381-2		31353-0026-2
	1	Valve body	9612-0940-03	9612-0941-03	9612-0942-03		9612-0943-03	9612-0944-03
Valve Plug with 0.8 RA								
	1	Plug complete	31353-1112-1	31353-1113-1	31353-1114-1	31353-1115-1	31353-1115-4	31353-1116-1
	1	Plug complete	31353-1112-2	31353-1113-2	31353-1114-2	31353-1115-2	31353-1115-5	31353-1116-2
	1	Plug complete	31353-1112-3	31353-1113-3	31353-1114-3	31353-1115-3	31353-1115-6	31353-1116-3
18a	1	Plug	31353-1007-1	31353-1007-2	31353-1007-3	31353-1007-4	31353-1007-8	31353-1007-5
18c	1	Plug head	31353-1123-1	31353-1124-1	31353-1125-1	31353-1126-1	9612-0985-02	31353-1127-1
18e	1	Screw	31353-1122-1	31353-1122-1	31353-1122-1	31353-1122-1	31353-1122-1	31353-1122-1
Alternative for 38 mm plug with 0.8 RA								
18c	1	Plug head	31353-1134-1					
18e	1	Screw	31353-1122-2					
Pos.	Qty.	Denomination	NW 40	NW 50	NW 65	76 mm	NW 80	NW 100
			38 mm	51 mm	63.5 mm			101.6 mm
Alternatives								
Stem seal								
17	1	Lip seal kit, EPDM (standard) ...	9611-92-0078	9611-92-0078	9611-92-0078	9611-92-0142	9611-92-0142	9611-92-0142
	1	Lip seal kit, NBR	9611-92-0079	9611-92-0079	9611-92-0079	9611-92-0143	9611-92-0143	9611-92-0143
	1	Lip seal kit, FPM	9611-92-0080	9611-92-0080	9611-92-0080	9611-92-0144	9611-92-0144	9611-92-0144
a●	1	Lip seal, EPDM	9612-2806-01	9612-2806-01	9612-2806-01	9612-3088-01	9612-3088-01	9612-3088-01
	1	Lip seal, NBR	9612-2806-02	9612-2806-02	9612-2806-02	9612-3088-02	9612-3088-02	9612-3088-02
	1	Lip seal, FPM	9612-2806-03	9612-2806-03	9612-2806-03	9612-3088-03	9612-3088-03	9612-3088-03
b	1	Plate	9612-2805-01	9612-2805-01	9612-2805-01	9612-3087-01	9612-3087-01	9612-3087-01
c●	1	Seal ring, EPDM	31353-0128-1	31353-0128-1	31353-0128-1	31353-0205-1	31353-0205-1	31353-0205-1
	1	Seal ring, NBR	31353-0128-2	31353-0128-2	31353-0128-2	31353-0205-2	31353-0205-2	31353-0205-2
	1	Seal ring, FPM	31353-0128-3	31353-0128-3	31353-0128-3	31353-0205-3	31353-0205-3	31353-0205-3
Stem seal								
17 d	1	Washer	31353-0452-1	31353-0452-1	31353-0452-1	31353-0452-2	31353-0452-2	31353-0452-2
e●	1	O-ring FEP/Silicone	9611-99-2909	9611-99-2909	9611-99-2909	9611-99-2910	9611-99-2910	9611-99-2910
f	1	Holder	31353-0453-1	31353-0453-1	31353-0453-1	31353-0454-1	31353-0454-1	31353-0454-1
g●	1	Valve body packing	31353-0451-1	31353-0451-1	31353-0451-1	31353-0451-2	31353-0451-2	31353-0451-2
Service kits special lip seals (marked ●)								
●		Service kit EPDM	9611-92-0447	9611-92-0451	9611-92-0455	9611-92-0459	9611-92-0463	9611-92-0467
●		Service kit NBR	9611-92-0448	9611-92-0452	9611-92-0456	9611-92-0460	9611-92-0464	9611-92-0468
●		Service kit FPM	9611-92-0449	9611-92-0453	9611-92-0457	9611-92-0461	9611-92-0465	9611-92-0469
●		Service kit FEP	9611-92-0450	9611-92-0454	9611-92-0458	9611-92-0462	9611-92-0466	9611-92-0470

Not manufactured anymore

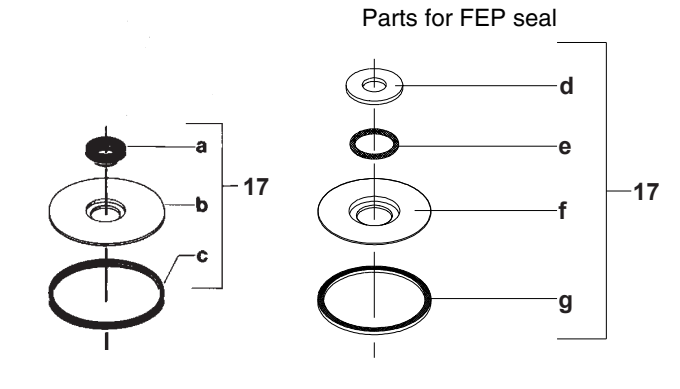
Recommended spare parts: **Service kits**.

Sanitary Proportional-Controlled Valve with Positioner Type SPC-1

Not manufactured anymore



Alternatives Stem seal



Reg. 2.13.1	2000-01
Intro.	9509