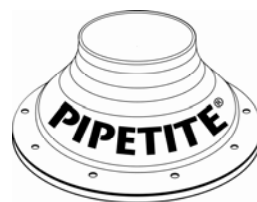


PIPETITE®**Matrix Process Solutions**

ABN 28 097 144 897

ACN 097 144 897

VICTORIA:

Unit 1/25 Kilpa Rd,

Moorabbin 3189

Ph: (03) 9553 0928

Fax: (03) 9553 0987

SOUTH AUSTRALIA:

Unit 8/36 Birralee Rd,

Regency Park 5010

Ph: (08) 8244 1322

Fax: (08) 8244 1722

QUEENSLAND:

Unit 7/33 Meakin Rd,

Meadowbrook 4131

Ph: (07) 3200 3433

Fax: (07) 3200 2477

APPLICATION:

Pipetite is the latest in sealing technology for use in wall and ceiling penetrations. Pipetite can seal a connection while allowing for significant movement of the pipe. Pre-drilled holes make installation simple, and a large range of sizes are available.

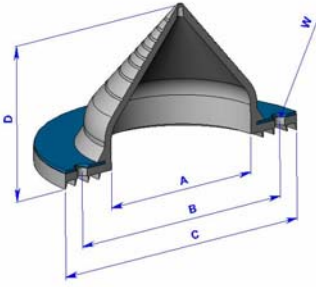
WORKING PRINCIPLE:

Pipetite's base incorporates self-sealing lips that provide flexibility and eliminate the need to "pack" the product off the wall. Silicone is not required during installation. Pipetite can be adapted to fit most pipe or tube diameters and allows the pipe to move significantly without causing damage or breaking the seal between the wall and the pipe.

STANDARD DESIGN:

- Available in five sizes to suit 0 – 180mm tube or pipe.
- Hygienic white silicon (FDA certified)
- 316 stainless steel support ring.
- Total self-sealing - no sealant required.
- Seal is flexible to accommodate movement.
- No cracking of silicon.
- 260°C temperature rating.
- No clean-up after installation.
- Materials compatible with cleaning solution.
- Predrilled for quick and easy installation.

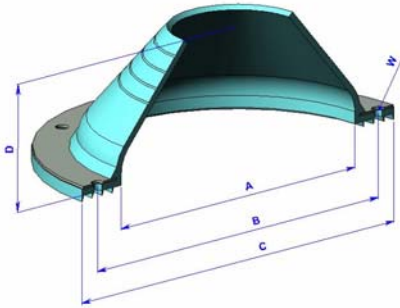
Standard-PIPETITE
PT(0-25), PT(0-65), PT(0-95)



Dimensions

Part #	Size	A	B	C	D
		mm	mm	mm	mm
PT-0-35	0-25	30	57	70	52
PT-0-65	0-65	64	91	106	60
PT-0-75	0-95	100	128	147	78

Standard-PIPETITE
PT(70-135), PT(100-180)



Dimensions

Part #	Size	A	B	C	D
		mm	mm	mm	mm
PT-70-125	70-135	140	168	187	64
PT-100-150	100-180	180	213	237	84

