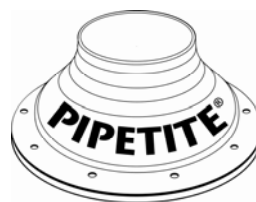


PIPETITE® ANCHOR

**Matrix Process Solutions**

ABN 28 097 144 897

ACN 097 144 897

VICTORIA:

Unit 1/25 Kilpa Rd,

Moorabbin 3189

Ph: (03) 9553 0928

Fax: (03) 9553 0987

SOUTH AUSTRALIA:

Unit 8/36 Birralee Rd,

Regency Park 5010

Ph: (08) 8244 1322

Fax: (08) 8244 1722

QUEENSLAND:

Unit 7/33 Meakin Rd,

Meadowbrook 4131

Ph: (07) 3200 3433

Fax: (07) 3200 2477

APPLICATION:

Pipetite Anchor is the latest accessory in the Pipetite range.

The unique stainless steel anchors specially designed for a smooth clean hygienic surface on the Pipetite surface. This is achieved through the special DOMED head on the anchor.

The specially selected thread pattern ensures absolute secure retention for any installation on hard walls or ceilings.

STANDARD DESIGN:

- Offers clean, crevice free finish to installed Pipetite.
- Stainless steel construction
- Special thread pattern to ensure positive retention in any concrete, brick or hard surface.
- 4mm drill size.
- Ordering Code: 317 127
- Standard Box Size 100 anchors

