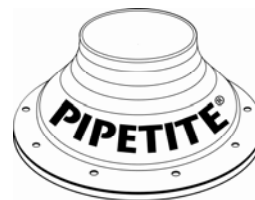


PIPETITE® PIPE in PIPE



Matrix Process Solutions

ABN 28 097 144 897

ACN 097 144 897

VICTORIA:

Unit 1/25 Kilpa Rd,

Moorabbin 3189

Ph: (03) 9553 0928

Fax: (03) 9553 0987

SOUTH AUSTRALIA:

Unit 8/36 Birralee Rd,

Regency Park 5010

Ph: (08) 8244 1322

Fax: (08) 8244 1722

QUEENSLAND:

Unit 7/33 Meakin Rd,

Meadowbrook 4131

Ph: (07) 3200 3433

Fax: (07) 3200 2477



APPLICATION:

PIPE in PIPE is the latest in sealing technology for use on existing Floor, wall and ceiling penetrations.

Pipetite PIPE in PIPE can seal a tube-in-tube transition while allowing for movement of the pipe.

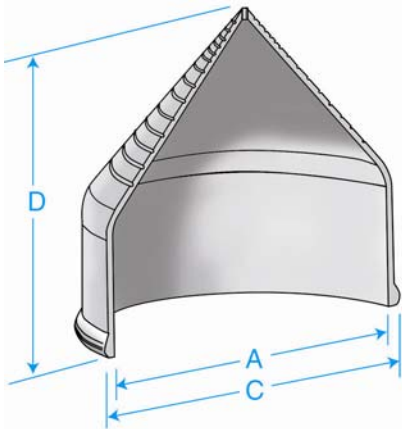
WORKING PRINCIPLE:

Pipetite's base incorporates self-sealing lips that provide full flexibility. Silicone is not required during installation. Pipetite can be adapted to fit most pipe or tube diameters and allows the pipe to move significantly without causing damage or breaking the seal between the wall and the pipe.

STANDARD DESIGN:

- Perfect solution for floor penetrations
- Available in two sizes to suit 4" & 6" sleeves.
- Will trim back to suit process lines up to Ø135mm
- Hygienic white silicon. FDA certified.
- Total self-sealing - no sealant required
- Seal is flexible to accommodate movement
- No cracking of silicon
- 260°C temperature rating.
- No clean-up after installation
- Materials compatible with cleaning solution

PIPE in PIPE 4" and 6"



Dimensions

Part #	Size	A	B	C	D
		mm	mm	mm	mm
319010	100 x 0-95	90		102	112
317121	150 x 70-135	141		153	150

