



## PD 688 Display

- 7" Colour Graphics Display with Capacitive Touch
- Programmable in COPP
- Dual 100 Mbit Ethernet
- 2 individual P-NET via RS485
- Joystick with pressure sensitive finger-pad and 4 function keys
- RFID Tag Reader with 13,56 MHZ Multiprotocol and NFC
- 2 configurable digital I/O's
- Acoustic Alarm
- LED for power On and Error indication
- 16 MByte Flash, 256 MByte RAM with Battery backup
- Micro SD-Card slot
- Fully potted
- Completely sealed, IP67@ front panel mounting

### APPLICATION

The PD 688 Display Device is a COPP controlled device that can operate as a display device as well as a programmable controller for the plant operation.

The device is programmable in COPP, which means that a part of, or complete automation application can be built and downloaded by the user.

The program can make use of ready-made components to control and monitor any process or machine application, both locally in the device but also via the network interacting with other devices.

The device operates in the P-NET environment and has been designed as a general-purpose operator interface with simple logon via the built-in RFID reader (Option).

PD 688 uses a 7" graphic colour touch display with LED backlight, providing high visibility and a large viewing angle.

The COPP programming of the unit enables that the capacitive touch can define any type of operator input field in any size and colour.

The front of the PD 688 is completely sealed (IP67), and is therefore suitable for use in any industrial environment. The compact design and outstanding environmental characteristics makes it highly suitable as a means for local operator intervention and control unit in process control and mobile applications.

PD 688 is equipped with a number of communication interfaces, both classic P-NET fieldbus RS485 and 100Mbit Ethernet.

Together with a large capacity for holding all kinds of data collections, this makes the device a very versatile unit in any kind of process control system.

### SPECIFICATIONS

#### Colour Display 7"

Resolution .....	800 x 480 pixels
View Area.....	155 x 94 mm
Active Area.....	152,4 x 91,4 mm
Touch.....	PCAP 2048 x 2048 points
Backlight Adjustable.....	LED

#### Communication

2 x P-NET (Screw Terminals).....	IEC 61158 Type 4
2 x Ethernet (Modular).....	10 BASE-T / 100 BASE-TX
1 x USB-A.....	2.0 HIGH SPEED

#### Memory

Onboard FLASH.....	16 MByte
RAM.....	256 MByte
MRAM .....	32 KByte
Memory Extension (4 - 32 GByte).....	Micro SD-card Slot

#### Misc

2 x User switches on backplane with sealing options
Error / ON LED (Rearside)
Battery for Backup and UPS - External. Li Poly 3.7 V, 830 mAh
4 x User-defined-keys with domes
Joystick with pressure sensitive finger pad
RFID Tag Reader for Access Control, 13.56 MHz
Acoustic Alarm

#### Power Specifications

Supply voltage nominal.....	24 VDC
Supply voltage.....	12 - 32 VDC
Typ. power consumption (@ 24 VDC) .....	3.5 W

#### Environmental Conditions

Operation temperature front.....	-20 °C to +55 °C
Ambient temperature rear.....	-20 °C to +70 °C
Storage temperature.....	-30 °C to +80 °C
Protection Class, frontpanel mount.....	IP67
Protection Class, rearside .....	IP40
Relative humidity (Rearside) .....	< 95 % RH (non-cond.)

...continues

**PD 688 connections**

The rear side of PD 688 provides terminals for all the connections to I/O's, power and communication ports.

Power and I/O's are connected to plug B.

Plug A is used for connecting the two individual P-NET RS485 ports.

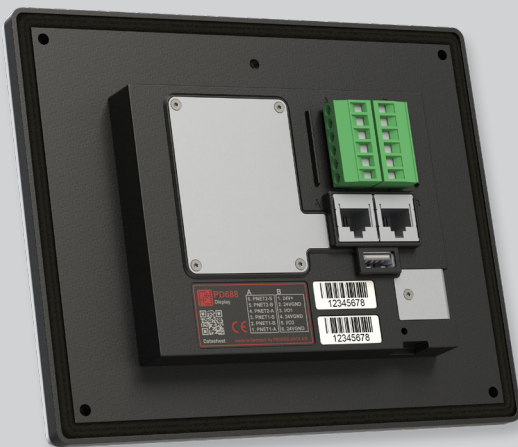
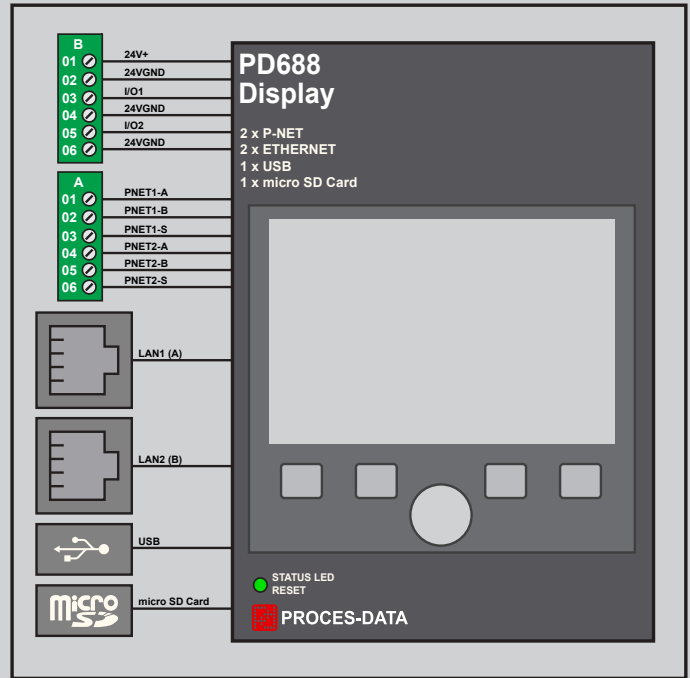
Two RJ-45 plugs are available for connecting P-NET via Ethernet through a two-port switch.

A USB-port is available as interface for e.g. a printer.

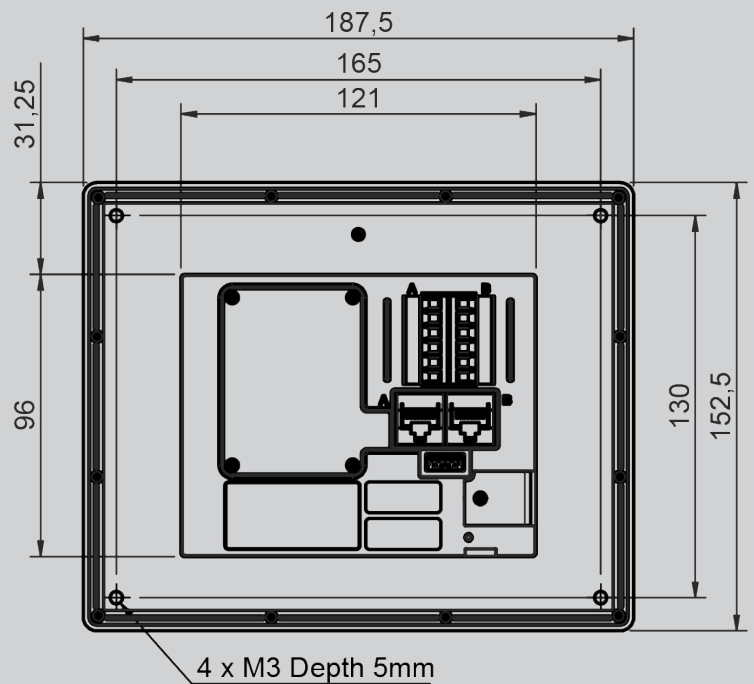
Two switches, with user-defined functions programmed in COPP, and a Micro SD-slot are available behind the sealing plate in the lower right corner.

Furthermore a battery for backup and UPS can be mounted below the sealing plate in the middle of the device.

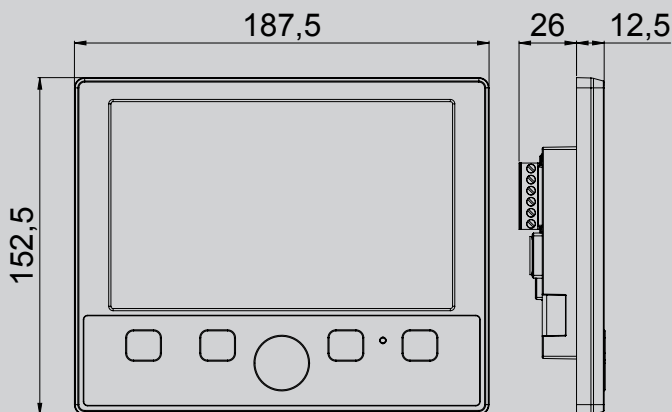
The Error/ON LED also works as a reset button for the device.



Rear View



**MECHANICAL (mm)**



**Mechanical Specifications**

Dimensions (HxWxD)..... 152.5 x 187.5 x 38.5 mm  
 Weight approx..... 750 g  
 Vibration ..... IEC 60068-2-6 : 2007  
 The PD 688 is fully potted.



**PROCES-DATA**

Navervej 8-10  
 DK-8600 Silkeborg  
 Tel. +45 87 200 300  
 salesdepartment@proces-data.com  
 www.proces-data.com

