



Maintain the Right Liquid Level

Alfa Laval LKSV Float Valve

Concept

Float valve LKSV is designed for maintaining a constant liquid level in a tank or container.

LKSV is, however, not suitable if the liquid has a tendency to foam, and the pressure drop is relatively high.

Working principle

Float valve LKSV is installed on the tank wall and the tank inlet tube is fixed to the valve. The seat opening is determined by the position of the float on the liquid. The movement of the float is transferred by mechanical connection to the valve which allows liquid flow into the tank to compensate for outward flow, thus maintaining a constant level in the tank.

Standard Design

LKSV has a valve body and float of stainless steel. The valve body is made for fitting into the side wall of a tank, and it is supplied with a rubber seal for the product side and a fibre ring which goes between the tank wall and the retaining nut. The valve body has an internal pipe thread for connecting the inlet pipe. The valve cone is fitted with an O-ring which seals against the valve seat.



TECHNICAL DATA

Temperature

Max. temperature: 95°C (EPDM)

Min. temperature: 10°C

Pressure

Max. product pressure: 400 kPa (4 bar)

PHYSICAL DATA

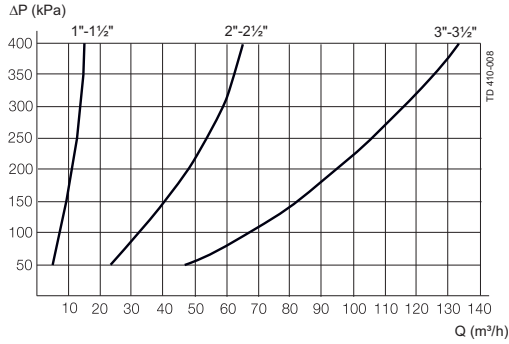
Materials

Product wetted steel parts: 1.4301 (304)

Product wetted seal: NBR

Surface finish: Semi bright

Pressure drop/capacity diagram



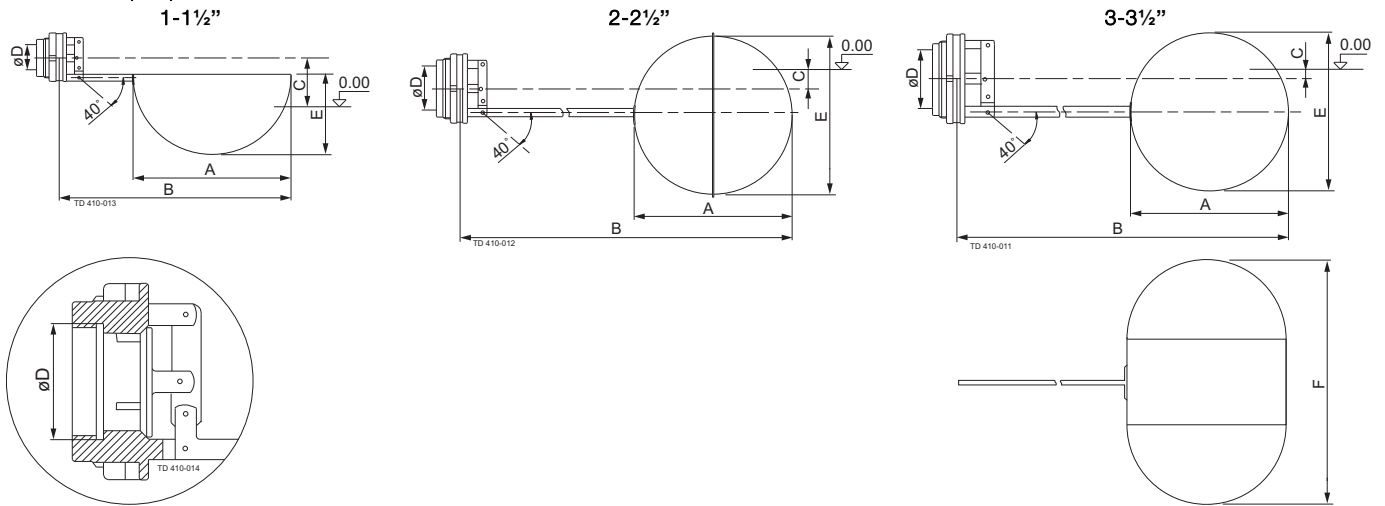
Note! Capacities are for float valve in fully open position.

Option:

Equipment

Screen to minimize splashing during tank filling.

Dimensions: (mm)



Size	1"	1½"	2"	2½"	3"	3½"
A	240	240	260	260	240	240
B	350	350	550	550	760	760
C	70	70	20	20	10	10
E	130	130	240	240	240	240
F					380	380
Weight (kg)	1.8	1.9	2.8	3.0	4.4	4.8

Connection D Internal thread R (BSP)	Internal valve diameter (mm)	Installation hole in tank wall (mm)	Max. wall thickness (excl. splashscreen) (mm)	Length of float arm (mm)
R 1" (BSP)	22.5	61	6	350
R 1½" (BSP)		61	6	
R 2" (BSP)	48.5	89	7	550
R 2½" (BSP)		89	7	
R 3" (BSP)	72	115	9	760
R 3½" (BSP)		115	9	

Alfa Laval reserves the right to change specifications without prior notification. ALFA LAVAL is a trademark registered and owned by Alfa Laval Corporate AB.

ESE00295EN 1507

© Alfa Laval

How to contact Alfa Laval

Contact details for all countries are continually updated on our website. Please visit www.alfalaval.com to access the information direct.