



# Avoid Particles in your Liquid

## LKIF In-Line Filter

PD 65371 GB1 2003-03

### Application

LKIF is a sanitary in-line filter for use in dairies, breweries and other food industries as well as in the pharmaceutical and other light chemical industries.

LKIF is designed for filtering particles from the products, e.g. for protection of pumps and other sensitive equipment.

### Working principle

The filter can easily be removed for cleaning without any interference with the process plant.

It is recommended to install the filter so that the inlet flow is as shown in fig.1. The particles will then be accumulated at the inside of the filter which facilitates the cleaning process.

The inlet flow can, however, be in the other direction, if required.

### Standard design

The filter consists of a filter element, clamp or union parts and seal rings.

Note! Only seal rings are delivered with the filter. Clamp ends or DS and SMS unions are optional.

### Sizes

25 mm (1"), 38 mm (1 1/2"), 51 mm (2"), 63.5 mm (2 1/2"), 76.1 mm (3"), and 101.6 mm (4").

### Materials

All wetted parts:	Acid-resistant steel AISI 316.
Other steel parts:	Stainless steel AISI 304.
Seals:	EPDM rubber.
Other seals:	Nitrile (NBR) and PTFE, if clamps.
Finish:	Semi bright.

### Technical data

Max. product pressure:	1000 kPa (10 bar).
Min. product pressure:	Full vacuum.
Temperature range:	-10°C to 140°C (EPDM).

### Ordering

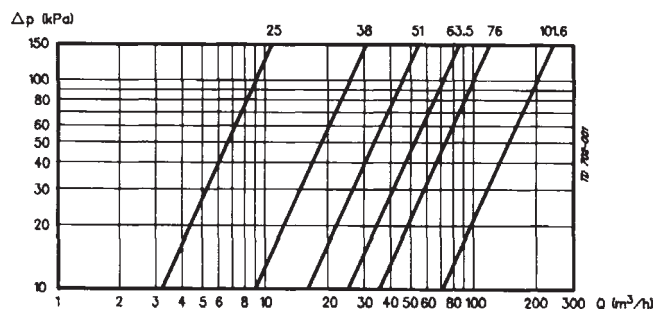
Please state the following when ordering:

- Size.
- Male type.



Fig. 1. LKIF with clamp ends or for DS and SMS unions.

### Pressure drop/capacity diagram



NOTE! For the diagram the following applies:  
 Medium: Water (20°C).  
 Measurement: In accordance with VDI 2173.

Fig. 2. Flow chart.

### Dimensions (mm)

Size	25 mm	38 mm	51 mm	63.5 mm	76.1 mm	101.6 mm
A	75	114	169	215	225	250
D <sub>1</sub>	31	40	53	67	80	106.5
D <sub>2</sub>	33.5	52	63	78	91	122
» Strainer area appr. (mm <sup>2</sup> )	4400	8400	16.200	26.100	33.300	50.600
M/DS male	18.5	20	20	24	24	24
M/SMS male	15	20	20	24	24	35
M/ISO clamp	21.5	21.5	21.5	21.5	21.5	21.5
Weight (kg)	0.027	0.060	0.100	0.150	0.197	0.299

### Filter element perforation (mm)

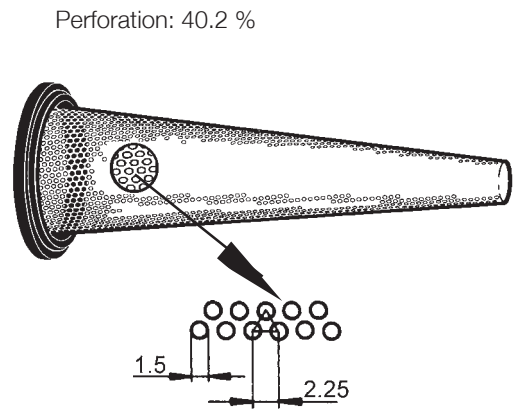


Fig. 4. Filter element.

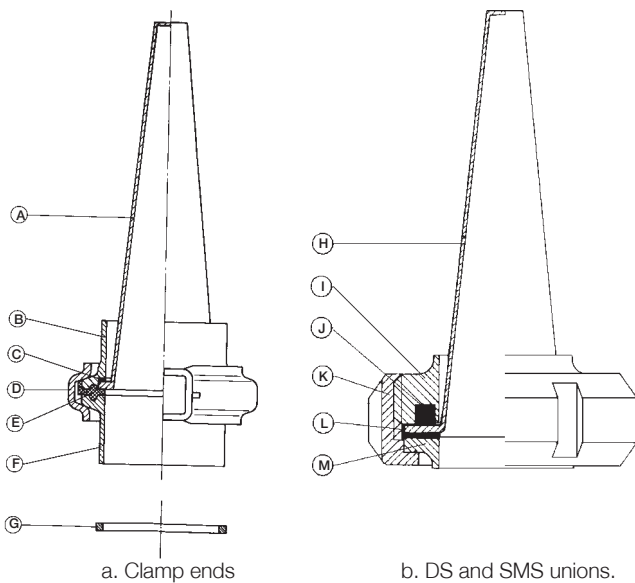


Fig. 3. Parts lists drawings.

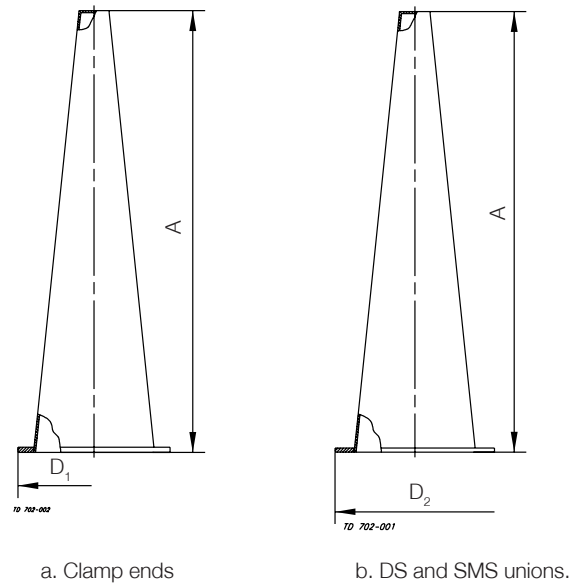


Fig. 5. Dimensions.

### Parts List

- |                        |                       |
|------------------------|-----------------------|
| A. Filter with ring.   | H. Filter with ring.  |
| B. Clamp-liner welded. | I. Male part welded.  |
| C. Seal ring.          | J. Seal ring.         |
| D. Clamp ring.         | K. Union nut.         |
| E. Clamp seal ring.    | L. Special seal ring. |
| F. Clamp-liner welded. | M. Liner welded.      |
| G. Replacement ring.   |                       |

PD 65371 GB1 2002-02

The information contained herein is correct at the time of issue, but may be subject to change without prior notice.

### How to contact Alfa Laval

Contact details for all countries are continually updated on our website. Please visit [www.alfalaval.com](http://www.alfalaval.com) to access the information direct.