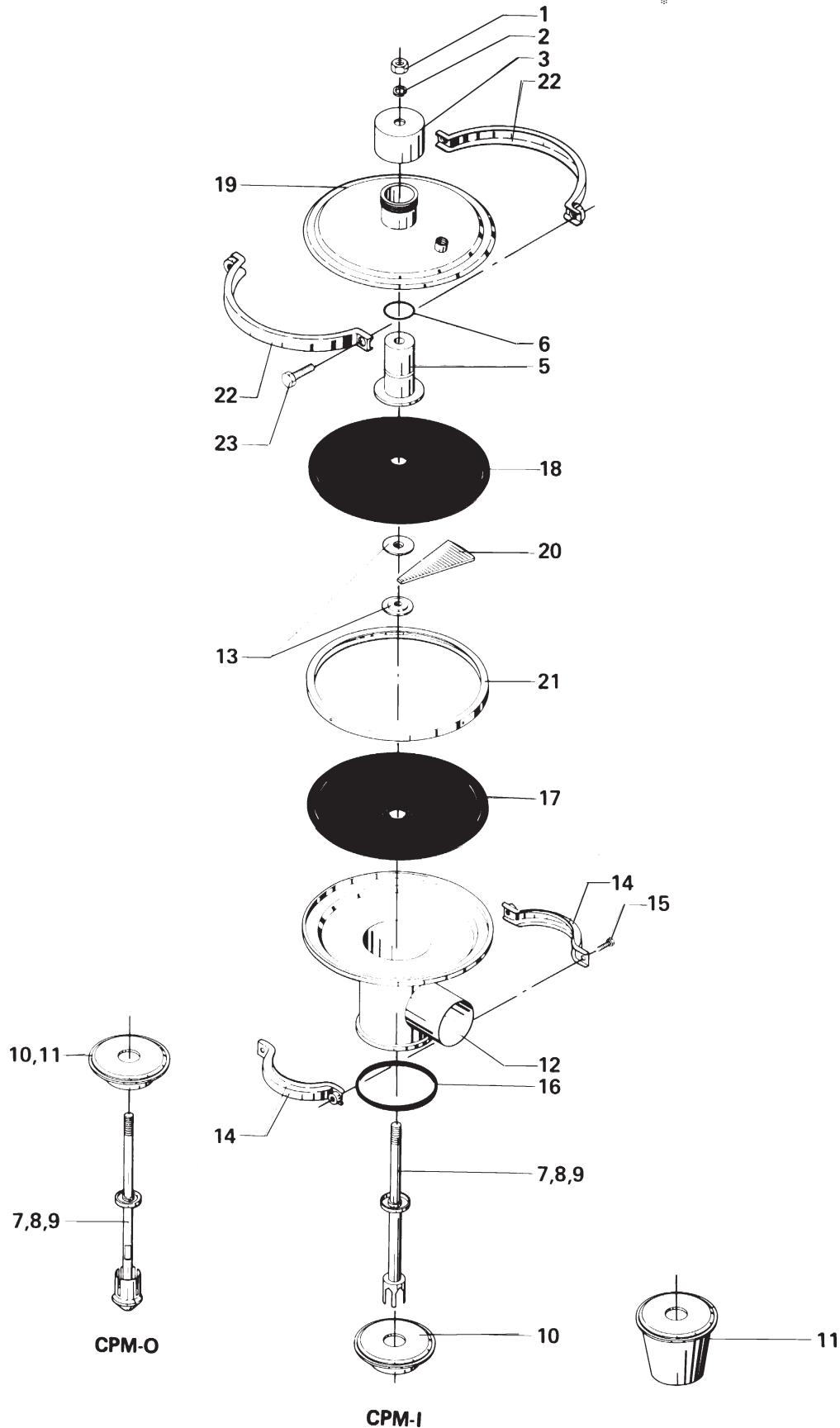


**Constant-Pressure Modulating Valve**  
**Type CPM-I & CPM-O, 7, 14, 25**

Not manufactured anymore



Reg. 2.13.9	9805
Intro. CPM = CPM-I	8011
Intro. CPM-O	8801

# Constant-Pressure Modulating Valve Type CPM-I & CPM-O, 7, 14, 25

Prod. Nos. 8209 and higher

Pos.	Qty.	Denomination	CPM-I	CPM-O
1	1	Nut .....	221891-15	221891-15
2	1	Spring washer .....	9611-99-1887	9611-99-1887
3	1	Top .....	31356-0003-1	31356-0003-1
5	1	Guide .....	31356-0072-1	31356-0072-1
6Δ	1	O-ring .....	223406-49	223406-49
7	1	Valve plug, kv-7 .....	31356-0037-1	31356-0134-1
8	1	Valve plug, kv-14 .....	31356-0005-2	31356-0134-2
9	1	Valve plug, kv-25 .....	31356-0005-1	31356-0143-1
10	1	Valve seat, kv-7.14 .....	31356-0007-2	31356-0135-1
11	1	Valve seat, kv-25 .....	31356-0007-1	31356-0145-1
12	1	Valve body .....	31356-0065-1	31356-0065-1
13	2	Inner ring .....	31356-0063-1	31356-0063-1
14+15	1	Clamp and screws (Period 9209-) .....	31320-0027-1	31320-0027-1
14	2	Clamp half (Period -9209) .....	31320-0022-1	31320-0022-1
15	2	Screw (Period -9209) .....	2210936-18	2210936-18
16Δ	1	Valve body packing, EPDM (Standard) .....	31353-0128-1	31353-0128-1
	1	Valve body packing, NBR (optional) .....	31353-0128-2	31353-0128-2
17Δ	1	Diaphragm, PTFE covered EPDM (Standard) .....	31356-0014-4	31356-0014-4
		(product side)		
18Δ	1	Diaphragm, NBR (air side), Blue dot .....	31356-0014-2	31356-0014-2
	1	Diaphragm, PTFE covered EPDM (optional) .....	31356-0014-4	31356-0014-4
19	1	Cover .....	31356-0067-1	31356-0067-1
20	12	Support sector .....	31356-0062-1	31356-0062-1
21	1	Outer ring .....	31356-0064-1	31356-0064-1
22	2	Clamp half (Period 9311-) .....	9612-3352-01	9612-3352-01
	2	Clamp half (Period 8011-9311) .....	31356-0061-1	31356-0061-1
23	2	Screw (Period 9311-) .....	9611-99-1222	9611-99-1222
	2	Screw (Period 8011-9311) .....	221041-06	221041-06
24	2	Washer (Period 9311-) .....	9611-99-0786	9611-99-0786
Δ		<b>Service kit. ....</b>	<b>9611-92-0118</b>	<b>9611-92-0118</b>

Parts marked with Δ are included in **Service kit**.

N.B.:

Old denomination kv-8, kv-16 and kv33.

New denomination kv-7, kv-14 and kv-25.

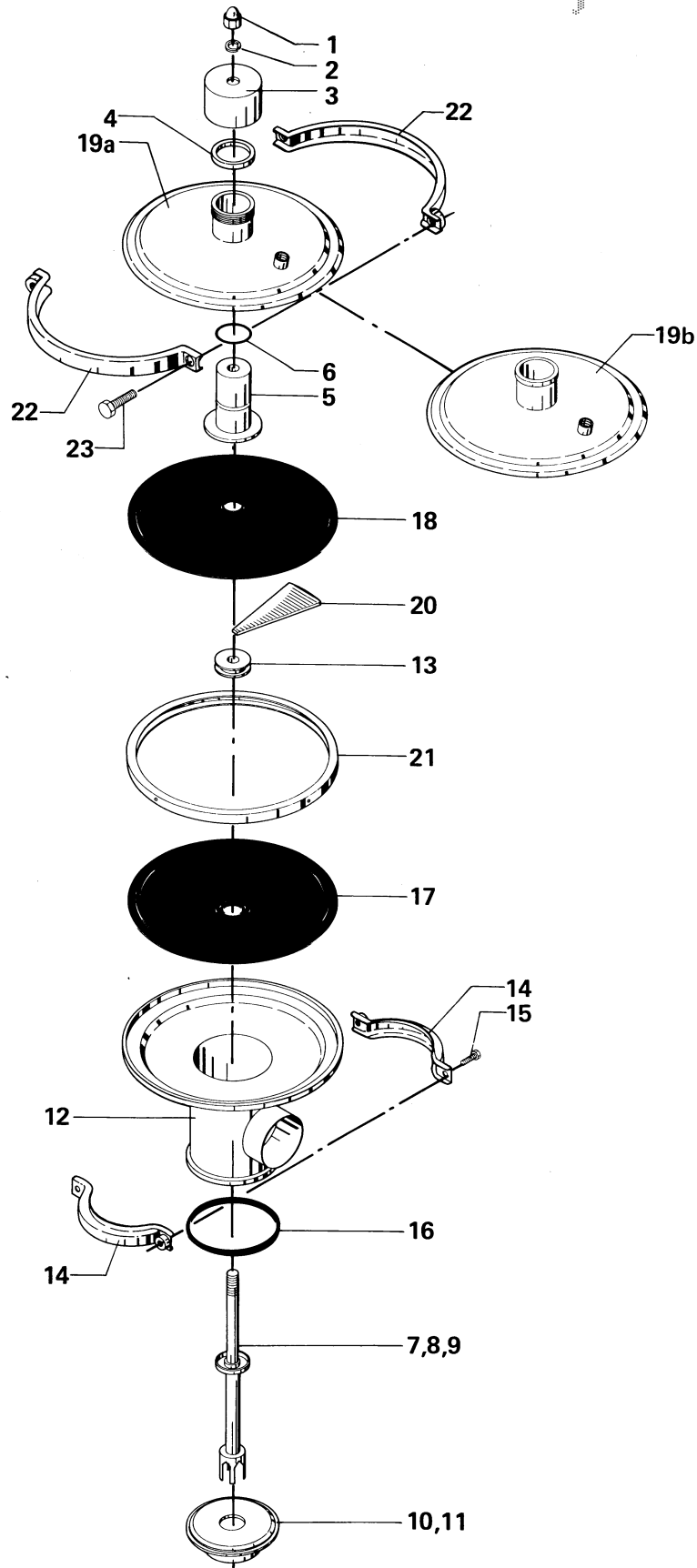
Not manufactured anymore

Recommended spare parts: **Service kit**.

Reg. 2.13.9	9805
Intro. CPM = CPM-I	8011
Intro. CPM-O	8801

Constant Pressure Valve  
Type CPM 8, 16, 33

Not manufactured anymore



Reg. 2.13.10	9805
Intro.	8011

## Constant Pressure Valve Type CPM 8, 16, 33

Pos.	Qty.	Denomination	CPM - 8
			CPM - 16 CPM - 33
1	1	Cap nut .....	221891-15
2	1	Spring washer .....	9611-99-1887
3	1	Collar .....	31356-0003-2
4	1	Ring .....	31356-0049-1
5	1	Guide .....	31356-0072-1
6Δ	1	O-ring .....	223406-49
7	1	Valve plug, kv-8 .....	31356-0037-1
8	1	Valve plug, kv-16 .....	31356-0005-2
9	1	Valve plug, kv-33 .....	31356-0005-1
10	1	Valve seat, kv-8,16 .....	31356-0007-2
11	1	Valve seat, kv-33 .....	31356-0007-1
12	1	Valve body .....	31356-0065-1
13	1	Inner ring .....	31356-0063-1
14	2	Clamp half .....	31320-0022-1
15	2	Screw .....	2210936-18
16Δ	1	Valve body packing, EPDM .....	31353-0128-1
	1	Valve body packing, NBR .....	31353-0128-2
	1	Valve body packing, FPM .....	
	1	Valve body packing, PTFE .....	31353-0451-1
17Δ	1	Diaphragm, PTFE covered EPDM .....	31356-0014-4 (product side)
18Δ	1	Diaphragm, NBR, (air side) .....	31356-0014-2 marked with blue dot
17/18	1	Diaphragm, NBR, (optional) .....	31356-0014-2 marked with blue dot
19	1	Cover (with thread) .....	31356-0067-1
20	12	Support sector .....	31356-0062-1
21	1	Outer ring .....	31356-0064-1
22	2	Clamp half .....	31356-0061-1
23	2	Screw .....	221041-06
Δ		<b>Service kit .....</b>	<b>9611-92-0118</b>

Parts marked with Δ are included in **Service kit**.

# Not manufactured anymore

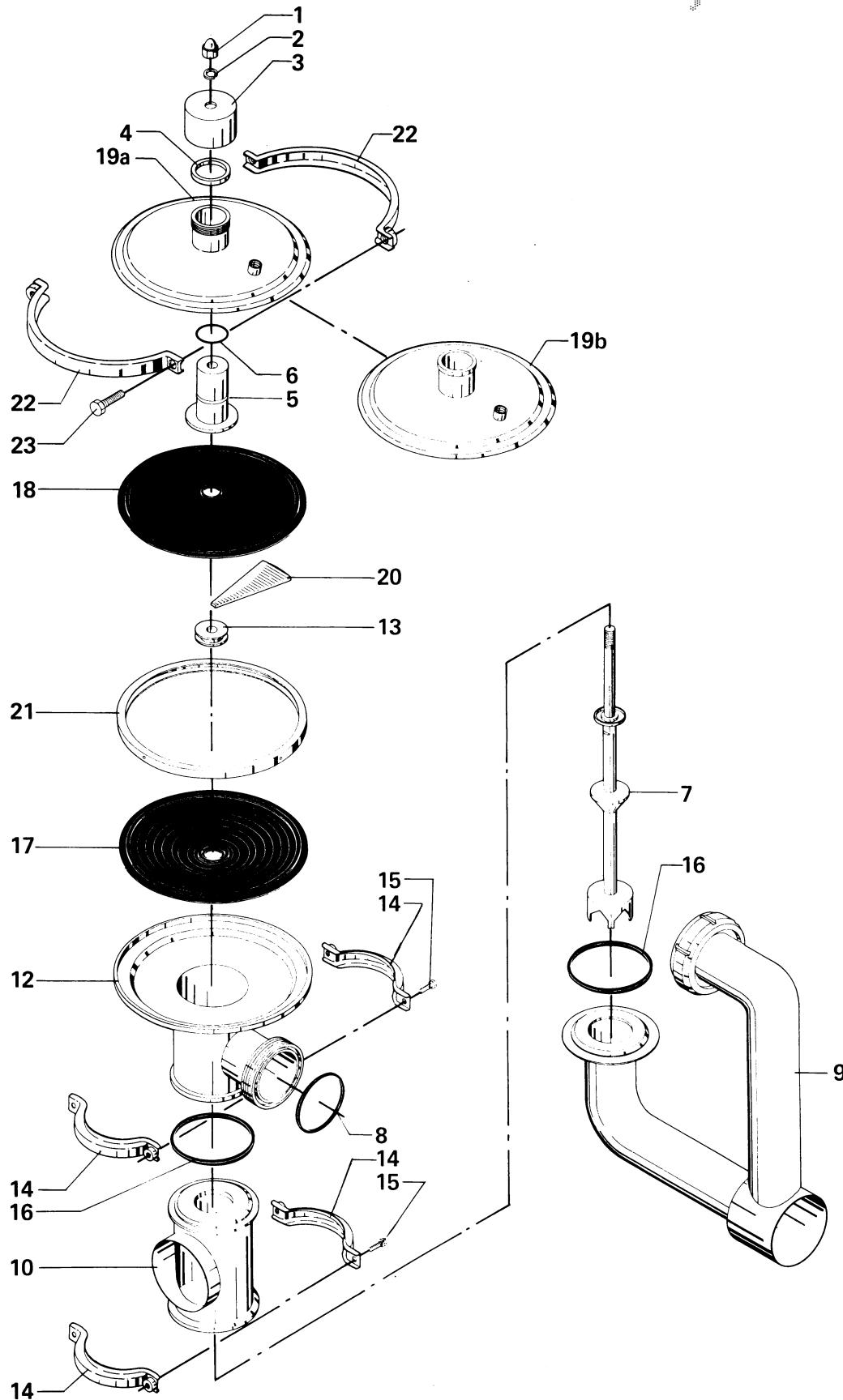
Please see CPM-I / CPM-O page 4.32.1 - SP70268

Recommended spare parts: **Service kit**.

Reg. 2.13.10	9805
Intro.	8011

Constant Pressure Valve  
Type CPM D-60

Not manufactured anymore



Reg. 2.13.11	9805
Intro.	8011

## Constant Pressure Valve Type CPM D-60

Pos.	Qty.	Denomination	D-60
1	1	Cap nut .....	221891-15
2	1	Spring washer .....	9611-99-1887
3	1	Collar .....	31356-0003-1
4	1	Ring .....	31356-0049-1
5	1	Guide .....	31356-0072-1
6Δ	1	O-ring .....	223406-49
7	1	Plug .....	31356-0006-1
8	1	Packing, EPDM (standard) .....	31317-0378-5
	1	Packing, NBR .....	190604
	1	Packing, FPM .....	31317-0378-2
9	1	Inlet pipe .....	31356-0021-1
10	1	Valve body, lower .....	31356-0018-1
12	1	Valve body .....	31356-0065-1
13	1	Inner ring .....	31356-0063-1
14	4	Clamp half .....	31320-0022-1
15	4	Screw .....	2210936-18
16Δ	2	Valve body packing, EPDM (standard) .....	31353-0128-1
	2	Valve body packing, NBR .....	31353-0128-2
17Δ	1	Diaphragm, PTFE covered EPDM .....	31356-0014-4 (product side)
	1	Diaphragm, NBR, marked with Blue dot .....	31356-0014-2 (optional)
18Δ	1	Diaphragm, NBR, (air side) .....	31356-0014-2 marked with Blue dot
19	1	Cover (with thread) .....	31356-0067-1
20	12	Support sector .....	31356-0062-1
21	1	Outer ring .....	31356-0064-1
22	2	Clamp half .....	31356-0061-1
23	2	Screw .....	221041-06
Δ		<b>Service kit .....</b>	<b>9611-92-0118</b>

Parts marked with Δ are included in **Service kit**.

# Not manufactured anymore

Please see D-60 page 4.34.1- SP70268

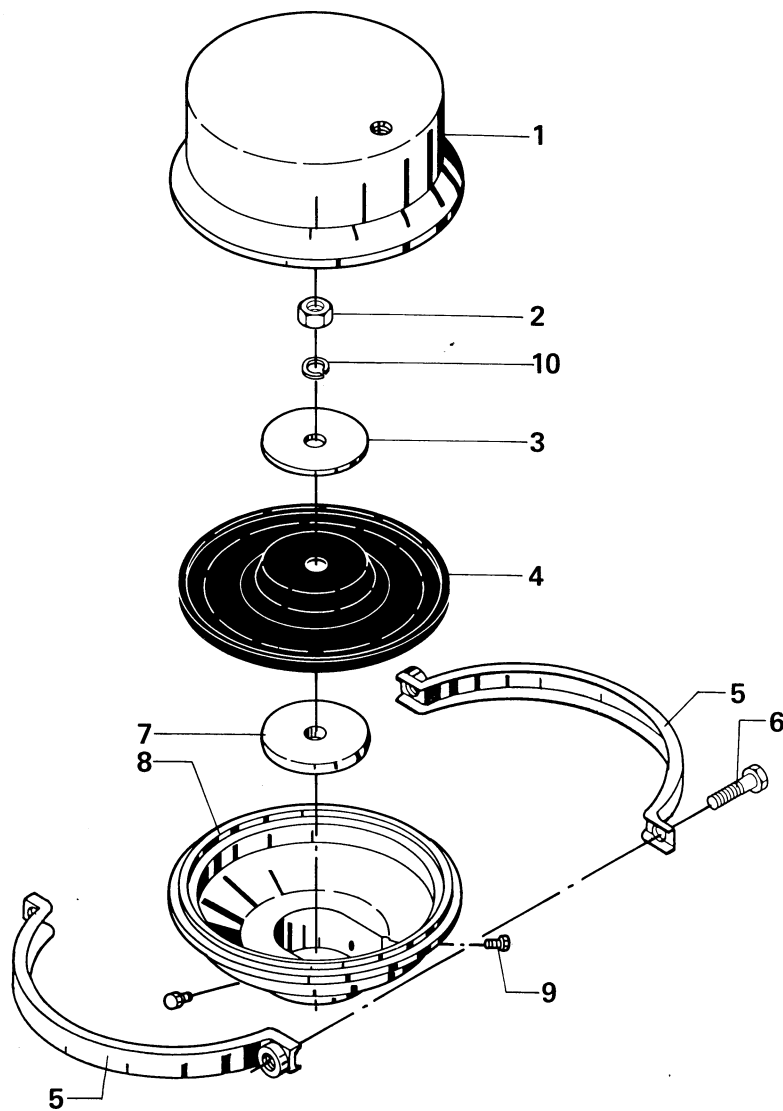
Recommended spare parts: **Service kit**.

Reg. 2.13.11	9805
Intro.	8011

# CPM-Booster 1 for Cover without Thread

---

Not manufactured anymore



---

Reg. 2.13.12	9805
Intro.	8001

# CPM-Booster 1 for Cover without Thread

---

Pos.	Qty.	Denomination	31356-0040-1
1	1	Cover .....	31356-0043-1
2	1	Nut .....	221803-29
3	1	Washer .....	223101-61
4	1	Bellow .....	31356-0044-1
5	2	Clamp half .....	31320-0021-1
6	2	Screw .....	2210936-18
7	1	Support washer .....	31356-0048-1
8	1	Booster housing .....	31356-0039-1
9	2	Screw .....	221031-02
10	1	Spring washer .....	223107-21

Not manufactured anymore

Recommended spare parts: Pos. 4

---

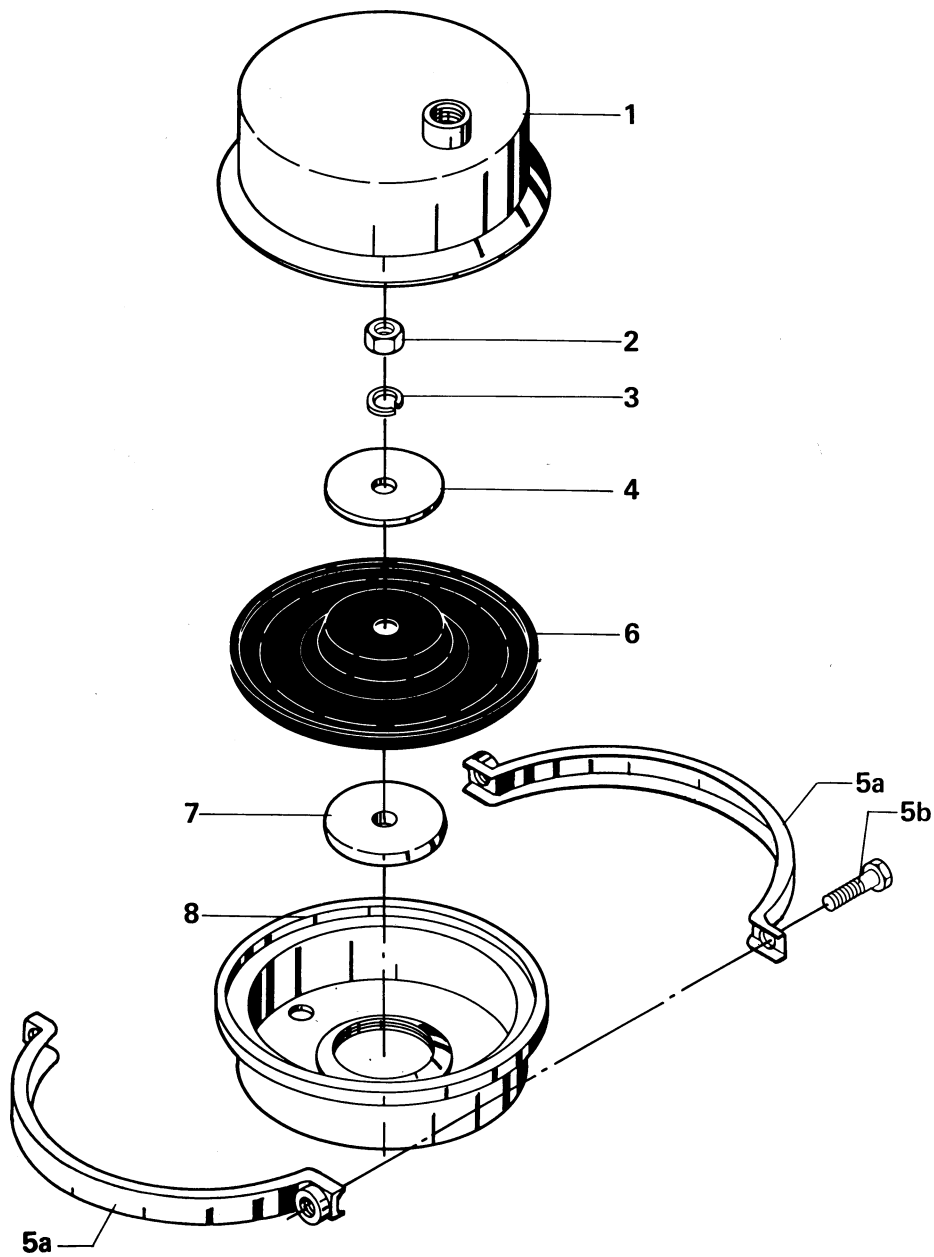
Reg. 2.13.12	9805
Intro.	8001



CPM-Booster 2 for Cover with Thread  
31356-0011-1 + 31356-0067-1/2

---

Not manufactured anymore



---

Reg. 2.13.13	9805
Intro.	8106

# CPM-Booster 2 for Cover with Thread 31356-0011-1 + 31356-0067-1/2

---

Pos.	Qty	Denomination	31356-0050-1
1	1	Booster cover .....	31356-0054-1
2	1	Nut .....	221803-29
3	1	Spring washer .....	223107-21
4	1	Washer .....	31356-0060-2
5a	2	Clamp half .....	31320-0021-1
5b	2	Screw .....	2210936-18
6	1	Bellow .....	31356-0044-1
7	1	Support washer .....	31356-0048-1
8	1	Booster housing .....	31356-0058-1

Not manufactured anymore

Recommended spare parts: Pos. 6

---

Reg. 2.13.13	9805
Intro.	8106