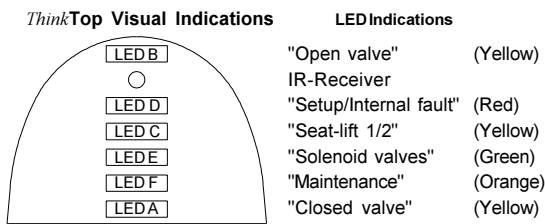


Setup diagram

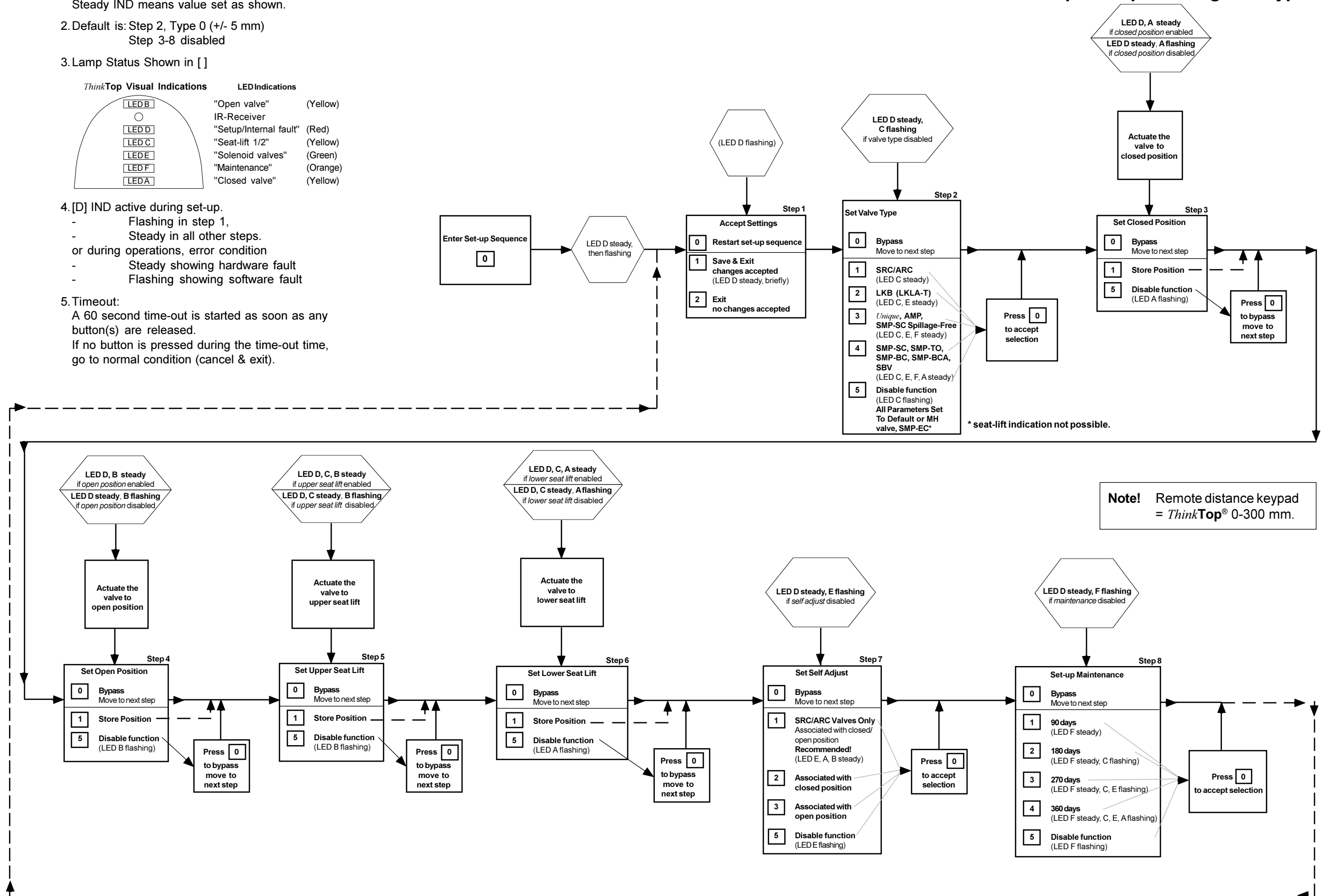
- Notes:**
- O - Scroll across, no change
 - - Notes Requires Key Function
 - - - - Notes Automatic Progress as Indicated

- General:**
1. Flashing IND means no value set.
Steady IND means value set as shown.
 2. Default is: Step 2, Type 0 (+/- 5 mm)
Step 3-8 disabled
 3. Lamp Status Shown in []



4. [D] IND active during set-up.
 - Flashing in step 1,
 - Steady in all other steps.
 or during operations, error condition
 - Steady showing hardware fault
 - Flashing showing software fault
5. Timeout:
 - A 60 second time-out is started as soon as any button(s) are released.
 - If no button is pressed during the time-out time, go to normal condition (cancel & exit).

ThinkTop® setup utilising IR keypad

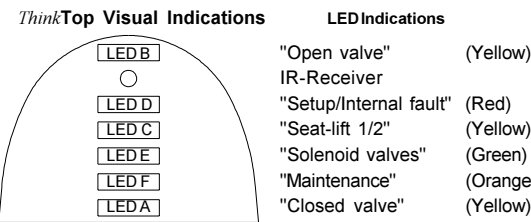


Setup diagram

ThinkTop® setup utilising local 'I' and 'II' keys

- Notes:**
- I - Scroll across, no change
 - - Notes Requires Key Function
 - - - - Notes Automatic Progress as Indicated

- General:**
1. Flashing IND means no value set.
Steady IND means value set as shown.
 2. Default is: Step 2, Type 0 (+/- 5 mm)
Step 3-8 disabled
 3. Lamp Status Shown in []



4. [D] IND active during set-up.
 - Flashing in step 1,
 - Steady in all other steps.
 or during operations, error condition
 - Steady showing hardware fault
 - Flashing showing software fault

5. Timeout:
 - A 60 second time-out is started as soon as any button(s) are released.
 - If no button is pressed during the time-out time, go to normal condition (cancel & exit).

