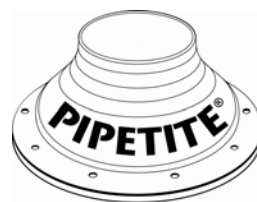


PIPETITE® ANCHORS



ANCHOR C



ANCHOR P



Matrix Process Solutions

ABN 28 097 144 897

ACN 097 144 897

VICTORIA:

Unit 1/25 Kilpa Rd

Moorabbin 3189

Ph: (03) 9553 0928

Fax: (03) 9553 0987

SOUTH AUSTRALIA:

Unit 8/36 Birralee Rd,

Regency Park 5010

Ph: (08) 8244 1322

Fax: (08) 8244 1722

QUEENSLAND:

Unit 7/33 Meakin Rd,

Meadowbrook 4131

Ph: (07) 3200 3433

Fax: (07) 3200 2477

APPLICATION:

Pipetite Anchors are the latest hygienic retention. Used in conjunction with eth Pipetite range of products, they offer the ultimate in smooth, hygienic fixings.

WORKING PRINCIPLE:

Pipetite Anchors are available to two styles.

Anchor C To suit Concrete or Brick surfaces. Simply drill a 4mm hole into your surface, then hammer the anchor into place. The Screw profile of the anchor provides the necessary retention.

And the new two piece design, **Anchor P** for use in panel walls, thin wall structures, and Concrete or brick surfaces. Drill a 6.5mm hole into your surface, then place the plastic insert into the hole. Position the Pipetite in place and hammer the nail into the hole.

The Plastic insert expands in the hole, anchoring the assembly in place.

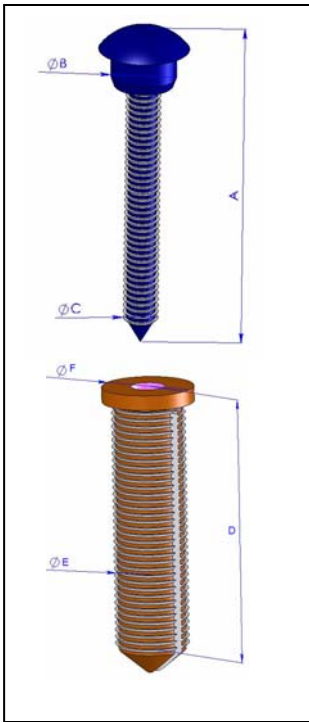
Both are self sufficient anchors, not requiring any additional bonding agents or the like.

STANDARD DESIGN:

Anchor C
All 316s/s construction.

Anchor P
Stainless steel Nail, Plastic insert.

ANCHOR P. To Suit Panel Walls, Concrete and Brick



Dimensions

Part #	Size	A	B	C	D	E	F
		mm	mm	mm	mm	mm	mm
317130	0-25	30.5	6	3.2	25	6.3	8

