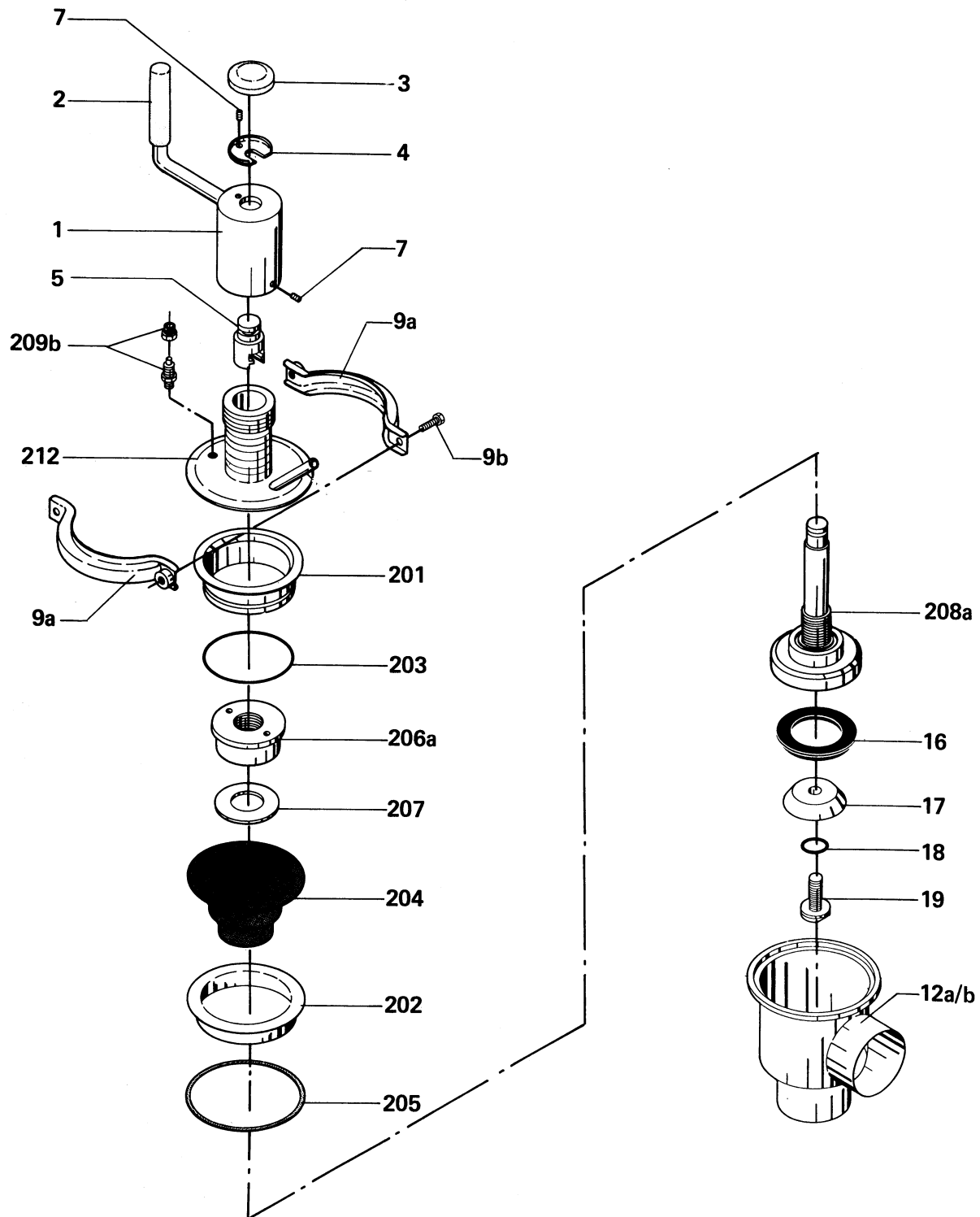


Stop Valve  
Type SMO-A

Not manufactured anymore



Reg. 2.11.21	9805
Intro.	8301

# Change-over Valve Type SMO-A

## Crank Mechanism

Pos.	Qty	Denomination	38 mm	51 mm	63.5 mm	76 mm	101.6 mm
	1	Crank mechanism complete .....	31353-0530-3	31353-0530-3	31353-0530-3	31353-0530-4	31353-0530-4
1	1	Crank .....	31353-0462-1	31353-0462-1	31353-0462-1	31353-0462-1	31353-0462-1
2	1	Handle .....	31353-0495-1	31353-0495-1	31353-0495-1	31353-0495-1	31353-0495-1
3	1	Cap .....	31353-0468-1	31353-0468-1	31353-0468-1	31353-0468-1	31353-0468-1
4	1	Washer .....	31353-0467-1	31353-0467-1	31353-0467-1	31353-0467-1	31353-0467-1
5	1	Stem holder .....	31353-0466-1	31353-0466-1	31353-0466-1	31353-0466-1	31353-0466-1
6	1	Guide .....	31353-1005-1	31353-1005-1	31353-1005-1	31353-1005-3	31353-1005-3
7	2	Set screw .....	221581-92	221581-92	221581-92	221581-92	221581-92
209b	1	Drain tube .....				31801-1444-1	31801-1444-1
212	1	Guide (incl. 209a/b) .....	31353-0459-2	31353-0459-2	31353-0459-2	31353-0460-2	31353-0460-2

## Valve Body Part

Pos.	Qty	Denomination	38 mm	51 mm	63.5 mm	76 mm	101.6 mm
<b>Clamp</b>							
9a+b	1	Clamps and screws .....	31320-0027-1	31320-0027-1	31320-0027-1	31320-0027-2	31320-0027-2
		(Period 9209-)					
9a	2	Clamp half (Period -9209) .....	31320-0022-1	31320-0022-1	31320-0022-1	31320-0021-1	31320-0021-1
9b	2	Screw (Period -9209) .....	2210936-18	2210936-18	2210936-18	2210936-18	2210936-18

## Valve Body

10a	1	Valve body, upper, 1 port .....	31353-0053-1	31353-0054-1	31353-0055-1	31353-0056-1	31353-0058-1
10b	1	Valve body, upper, 2 ports .....	31353-0053-6	31353-0054-6	31353-0055-6	31353-0056-6	31353-0058-6
11	1	Valve body packing, EPDM .....	31353-0128-1	31353-0128-1	31353-0128-1	31353-0205-1	31353-0205-1
12a	1	Valve body, lower, 2 ports .....	31353-0375-1	31353-0376-1	31353-0380-1	31353-0381-1	31353-0026-1
12b	1	Valve body, lower, 3 ports .....	31353-0375-6	31353-0376-6	31353-0380-6	31353-0381-6	31353-0026-6

## Valve Plug

	1	Plug, complete EPDM .....	31353-0501-1	31353-0501-2	31353-0501-3	31353-0501-4	31353-0501-5
208b	1	Stem .....	31353-0472-1	31353-0472-2	31353-0472-3	31353-0477-1	31353-0477-2
14	1	Packing, upper, EPDM .....	31353-0321-1	31353-0321-1	31353-0323-1	31353-0324-1	31353-0325-1
15	1	Middle piece .....	31353-0363-1	31353-0364-1	31353-0365-1	31353-0366-1	31353-0367-1
16	1	Packing, lower, EPDM .....	31353-0320-1	31353-0321-1	31353-0322-1	31353-0324-1	31353-0325-1
17	1	Washer .....	31353-0357-1	31353-0358-1	31353-0359-1	31353-0360-1	31353-0361-1
18	1	O-ring, EPDM .....	990034-01	990034-01	990034-01	990034-01	990034-01
19	1	Screw .....	31353-0362-1	31353-0362-1	31353-0362-1	31353-0362-1	31353-0362-1

## Diaphragm Parts

201	1	Pressure support .....	31353-0457-1	31353-0457-1	31353-0457-1	31353-0458-1	31353-0458-1
202	1	Vacuum support .....	31353-0496-1	31353-0496-1	31353-0496-1	31353-0544-1	31353-0544-1
203	1	O-ring, EPDM .....	990014-01	990014-01	990014-01	31353-0542-1	31353-0542-1
204	1	Diaphragm, EPDM .....	31353-0407-1	31353-0407-1	31353-0407-1	31353-0414-1	31353-0414-1
205	1	Packing, PTFE .....	31353-0497-1	31353-0497-1	31353-0497-1	31353-0506-1	31353-0506-1
206b	1	Nut .....	31353-0405-1	31353-0405-1	31353-0405-1	31353-0412-1	31353-0412-1
207	1	Washer .....	31353-0404-1	31353-0404-1	31353-0404-1	31353-0411-1	31353-0411-1

Not manufactured anymore

Recommended spare parts: Pos. 3,7,203,204,205 and packings and O-rings for the valve plugs.

Reg. 2.11.22	9805
Intro.	8301