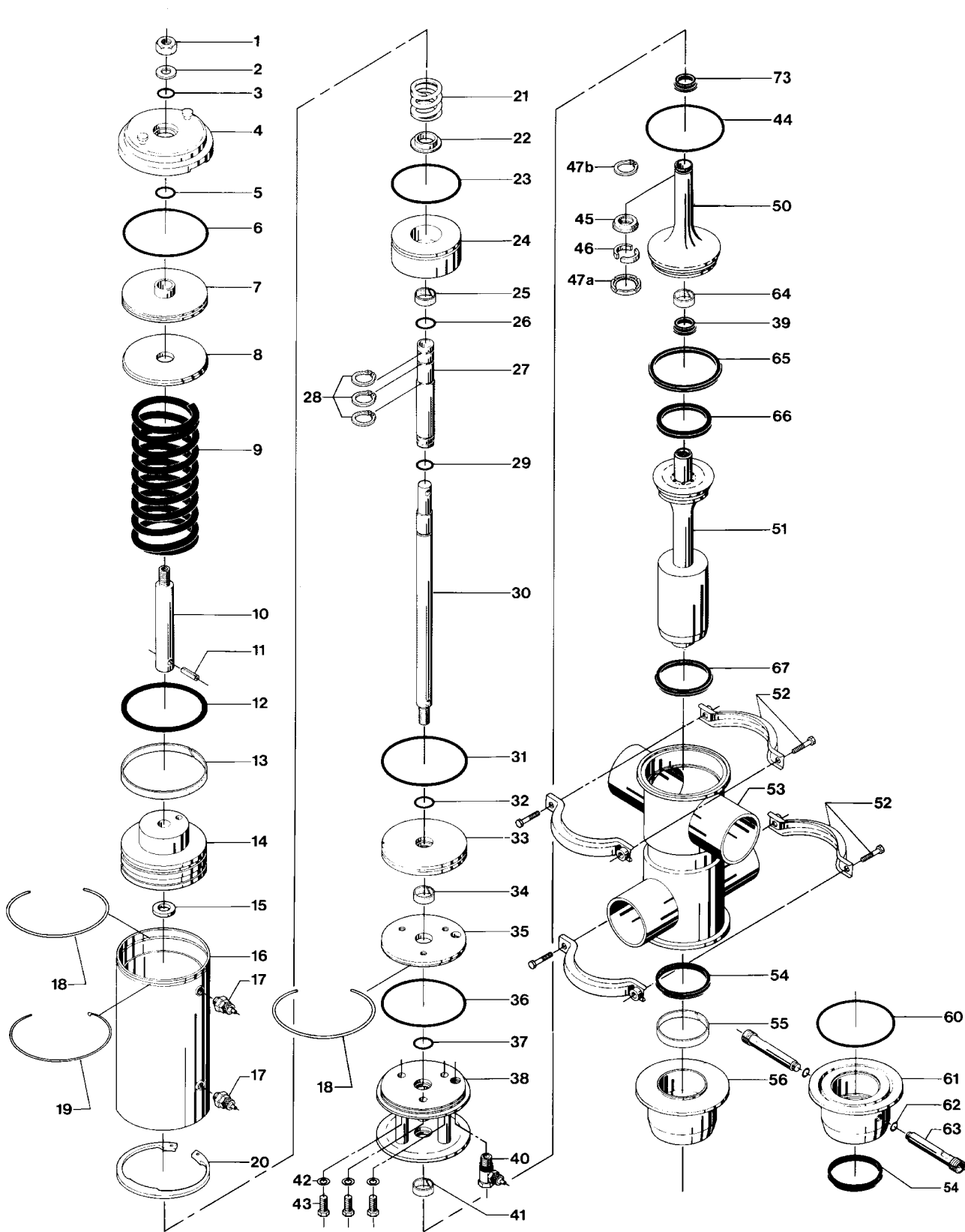


**Sanitary Mixproof Valve  
Type SMP-SC - Seal Ring Plug  
(51-101.6 mm / NW50-100)**



Not manufactured anymore

Reg. 2.12.16	9805
Intro.	9410

# Sanitary Mixproof Valve Type SMP-SC - Seal Ring Plug (51-101.6 mm / NW50-100)

Pos.	Qty.	Denomination	51-76 mm NW50-65	101.6 mm NW80-100
1	1	Nut .....	9611-99-2576	9611-99-2576
2	1	Washer .....	9611-99-0706	9611-99-0706
3	1	O-ring, NBR .....	9611-99-0096	9611-99-0096
4	1	Cylinder lid .....	9612-2916-01	9612-3121-01
5	1	O-ring, NBR .....	223406-25	223406-25
6	1	O-ring, NBR .....	260104-67	9611-99-2579
7	1	Upper piston .....	9612-2913-01	9612-3101-01
8	1	Flange .....	9612-2914-01	9612-3102-01
9	1	Spring .....	9612-2928-01	9612-3154-01
10	1	Upper piston rod .....	9612-2910-01	9612-3104-01
11	1	Pin .....	9611-99-2562	9611-99-1314
12	1	O-ring, NBR .....	9611-99-2556	9611-99-2580
13	1	Guide ring, Turcite .....	9612-2926-01	9612-2926-08
14	1	Main piston .....	9612-2935-01	9612-3105-01
15	1	Support washer .....	9612-2911-01	
16	1	Cylinder .....	9612-2918-01	9612-3137-01
17	2	Air fitting .....	9611-99-2563	9611-99-2563
18	2	Retaining ring .....	9612-2929-01	9612-2929-02
19	1	Lock ring .....	9612-2930-01	9612-3132-01
20	1	Circlip .....	9611-99-2561	9611-99-2589
21	1	Spring .....	9612-2927-01	9612-3155-01
22	1	Spring support .....	9612-2912-01	9612-3106-01
23	1	O-ring, NBR .....	9611-99-2568	9611-99-0643
24	1	Piston .....	9612-2906-01	9612-3107-01
25	1	Guide ring, Turcite .....		9612-2926-04
26	1	O-ring, NBR .....	223406-25	9611-99-2582
27	1	Lower piston rod .....	9612-2959-01	9612-3134-01
28	3	Circlip .....	9611-99-2565	9611-99-2588
29	1	O-ring, NBR .....	223404-31	223406-25
31	1	O-ring, NBR .....	260104-67	9611-99-2580
32	1	O-ring, NBR .....	223406-25	9611-99-2581
33	1	Lower piston .....	9612-2905-01	9612-3147-01
34	1	Guide ring, Turcite .....		9612-2926-10
35	1	Flange .....	9612-2915-01	9612-3120-01
36	1	O-ring, NBR .....	260104-67	9611-99-2579
37	1	O-ring, NBR .....	223406-25	9611-99-2581
38	1	Bonnet .....	9612-4285-01	9612-4257-01
39	1	Lip seal, EPDM (Standard) .....	9612-3205-01	9612-3168-01
	1	Lip seal, NBR .....	9612-3205-02	9612-3168-02
	1	Lip seal, FPM .....	9612-3205-03	9612-3168-03
40	1	Air fitting .....	9611-99-2564	9611-99-2564
41	1	Guide ring, PTFE .....	9612-2926-11	9612-2926-12
42	3	Washer .....	9611-99-2572	9611-99-2590
43	3	Screw .....	9611-99-0462	9611-99-1910
44	1	O-ring, EPDM (Standard) .....	9611-99-2931	9611-99-2934
	1	O-ring, NBR .....	9611-99-2932	9611-99-2935
	1	O-ring, FPM .....	9611-99-2933	9611-99-2936
45	1	Lock ring .....	9612-2983-01	9612-3136-01
46	2	Clamp ring .....	9612-2960-01	9612-3135-01
47a	1	Clip ring .....	31353-0727-1	
47b	1	Circlip .....		9611-99-2663
51	1	Lower plug .....	9612-4327-01	9612-3916-01
	1	Lower plug, EPDM (Pos.51+67) .....	9612-4328-01	9612-4090-04
	1	Lower plug, NBR (Pos.51+67) .....	9612-4328-02	9612-4090-05
	1	Lower plug, FPM (Pos.51+67) .....	9612-4328-03	9612-4090-06
52	2	Clamp complete .....	9611-31-105-5	9611-31-105-7
54	1	Double lip seal, EPDM (Standard) ..	9612-3175-01	9612-3204-01
	1	Double lip seal, NBR .....	9612-3175-02	9612-3204-02
	1	Double lip seal, FPM .....	9612-3175-03	9612-3204-03
55	1	Guide ring, PTFE .....	9612-2926-02	9612-2926-06
56	1	Balancing housing (Standard) .....	9612-3256-01	9612-3285-01
64	1	Guide ring .....	9612-2926-13	9612-2926-12

Pos.	Qty.	Denomination	51-76 mm NW50-65	101.6 mm NW80-100
65	1	Seal ring, EPDM, (Standard) .....	9612-3593-03	9612-3593-09
	1	Seal ring, NBR .....	9612-3593-01	9612-3593-07
	1	Seal ring, FPM .....	9612-3593-02	9612-3593-08
66	1	Seal ring, EPDM, (Standard) .....	9612-3594-06	9612-3594-03
	1	Seal ring, NBR .....	9612-3594-04	9612-3594-01
	1	Seal ring, FPM .....	9612-3594-05	9612-3594-02
67	1	Seal ring, EPDM (Standard) .....	9612-3593-06	9612-3593-12
	1	Seal ring, NBR .....	9612-3593-04	9612-3593-10
	1	Seal ring, FPM .....	9612-3593-05	9612-3593-11
73	1	Lip seal, EPDM (Standard) .....	9612-3175-04	9612-3204-04
	1	Lip seal, NBR .....	9612-3175-05	9612-3204-05
	1	Lip seal, FPM .....	9612-3175-06	9612-3204-06

Pos.	Qty.	Denomination	51-76 mm NW50-65	101.6 mm NW80-100
		CIP-kit for balancing plug complete, EPDM .....	9611-92-0137	9611-92-0138
54	1	Double lip seal, EPDM (Standard) ..	9612-3175-01	9612-3204-01
55	1	Guide ring, PTFE .....	9612-2926-02	9612-2926-06
60	1	O-ring for CIP, EPDM .....	9611-99-2700	9611-99-2571
61	1	Balancing housing for CIP .....	9612-3255-01	9612-3286-01
62	2	O-ring, EPDM (Period 9603-) .....	9611-99-3119	9611-99-3119
	2	Washer, Nylon (Period 9410-9603) ..	9611-99-2566	9611-99-2566
63	2	Flushing tube (Period 9603-) .....	31357-1017-1	31357-1017-1
	2	Flushing tube (Period 9410-9603) ..	31357-1013-1	31357-1013-1
		Accessories		
	1	Tool complete for actuator .....	9612-3174-01	9612-3174-01

Pos.	Qty.	Denomination	51mm/NW50	63.5mm/NW65	76mm	NW80	101.6mm/NW100
		Actuator complete (Pos. 1-44, 73) .....	9612-4607-03	9612-4607-02	9612-4607-05	9612-4607-12	9612-4607-13
30	1	Inner stem .....	9612-4276-01	9612-4276-04	9612-4276-03	9612-4276-06	9612-4276-07
50	1	Upper plug .....	9612-4301-01	9612-4301-02	9612-4301-03	9612-4274-03	9612-4274-04
	1	Upper plug, EPDM (Pos.39+50+64+65+66) ..	9612-4300-01	9612-4300-04	9612-4300-07	9612-4275-07	9612-4275-10
	1	Upper plug, NBR (Pos.39+50+64+65+66) .....	9612-4300-02	9612-4300-05	9612-4300-08	9612-4275-08	9612-4275-11
	1	Upper plug, FPM (Pos.39+50+64+65+66) .....	9612-4300-03	9612-4300-06	9612-4300-09	9612-4275-09	9612-4275-12

**Service kit for actuator**

□	1	Service kit A, NBR. ....	9611-92-0127	9611-92-0130
---	---	--------------------------	--------------	--------------

**Service kit for product wetted parts**

Δ	1	Service kit B, EPDM. ....	9611-92-0238	9611-92-0241
Δ	1	Service kit B, NBR. ....	9611-92-0239	9611-92-0242
Δ	1	Service kit B, FPM. ....	9611-92-0240	9611-92-0243

**Service kit for valve with CIP-connection on balancing housing**

○	1	Service kit C, EPDM. ....	9611-92-0244	9611-92-0247
○	1	Service kit C, NBR. ....	9611-92-0245	9611-92-0248
○	1	Service kit C, FPM. ....	9611-92-0246	9611-92-0249

**Rebuilding kit from bonded to seal ring plug**

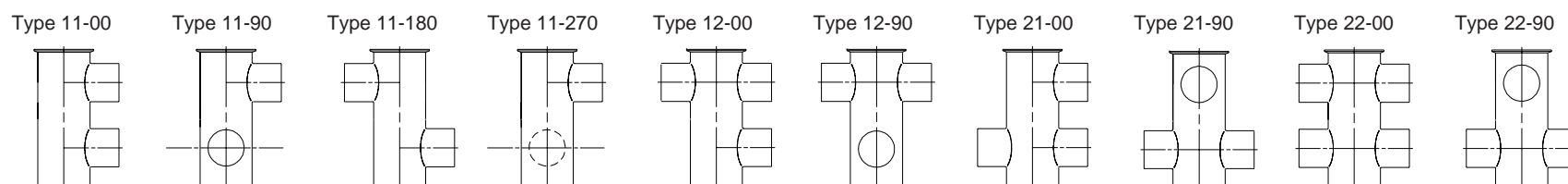
51 mm/NW50 .....	9611-92-0250
63.5 mm/NW65 .....	9611-92-0251
76 mm .....	9611-92-0252
NW80 .....	9611-92-0253
101.6 mm/NW100 .....	9611-92-0254

Parts marked with □ are included in **Service kit A**.  
 Parts marked with Δ are included in **Service kit B**.  
 Parts marked with ○ are included in **Service kit C**.

Not manufactured anymore

Pos.	Qty.	Denomination	51 mm	63.5 mm	76 mm	101.6 mm	NW 50	NW 65	NW80	NW100
53	1	Valve body 11-00 .....	9612-4290-01	9612-4290-05	9612-4290-09	9612-4260-05	9612-4289-01	9612-4289-05	9612-4260-09	9612-4260-13
	1	Valve body 12-00 .....	9612-4290-02	9612-4290-06	9612-4290-10	9612-4260-06	9612-4289-02	9612-4289-06	9612-4260-10	9612-4260-14
	1	Valve body 21-00 .....	9612-4290-03	9612-4290-07	9612-4290-11	9612-4260-07	9612-4289-03	9612-4289-07	9612-4260-11	9612-4260-15
	1	Valve body 22-00 .....	9612-4290-04	9612-4290-08	9612-4290-12	9612-4260-08	9612-4289-04	9612-4289-08	9612-4260-12	9612-4260-16
	1	Valve body 11-90 .....	9612-4290-13	9612-4290-17	9612-4290-21	9612-4260-21	9612-4289-13	9612-4289-17	9612-4260-25	9612-4260-29
	1	Valve body 12-90 .....	9612-4290-14	9612-4290-18	9612-4290-22	9612-4260-22	9612-4289-14	9612-4289-18	9612-4260-26	9612-4260-30
	1	Valve body 21-90 .....	9612-4290-15	9612-4290-19	9612-4290-23	9612-4260-23	9612-4289-15	9612-4289-19	9612-4260-27	9612-4260-31
	1	Valve body 22-90 .....	9612-4290-16	9612-4290-20	9612-4290-24	9612-4260-24	9612-4289-16	9612-4289-20	9612-4260-28	9612-4260-32
	1	Valve body 11-180 .....	9612-4290-25	9612-4290-26	9612-4290-27	9612-4260-34	9612-4289-25	9612-4289-26	9612-4260-35	9612-4260-36
	1	Valve body 11-270 .....	9612-4290-28	9612-4290-29	9612-4290-30	9612-4260-38	9612-4289-28	9612-4289-29	9612-4260-39	9612-4260-40

**Valve body combinations:**



Recommended Spare Parts: **Service kit**.

**Sanitary Mixproof Valve  
Type SMP-SC - Seal Ring Plug  
(51-101.6 mm / NW50-100)**

**Sanitary Mixproof Valve  
Type SMP-SC - Seal Ring Plug  
(51-101.6 mm / NW50-100)**

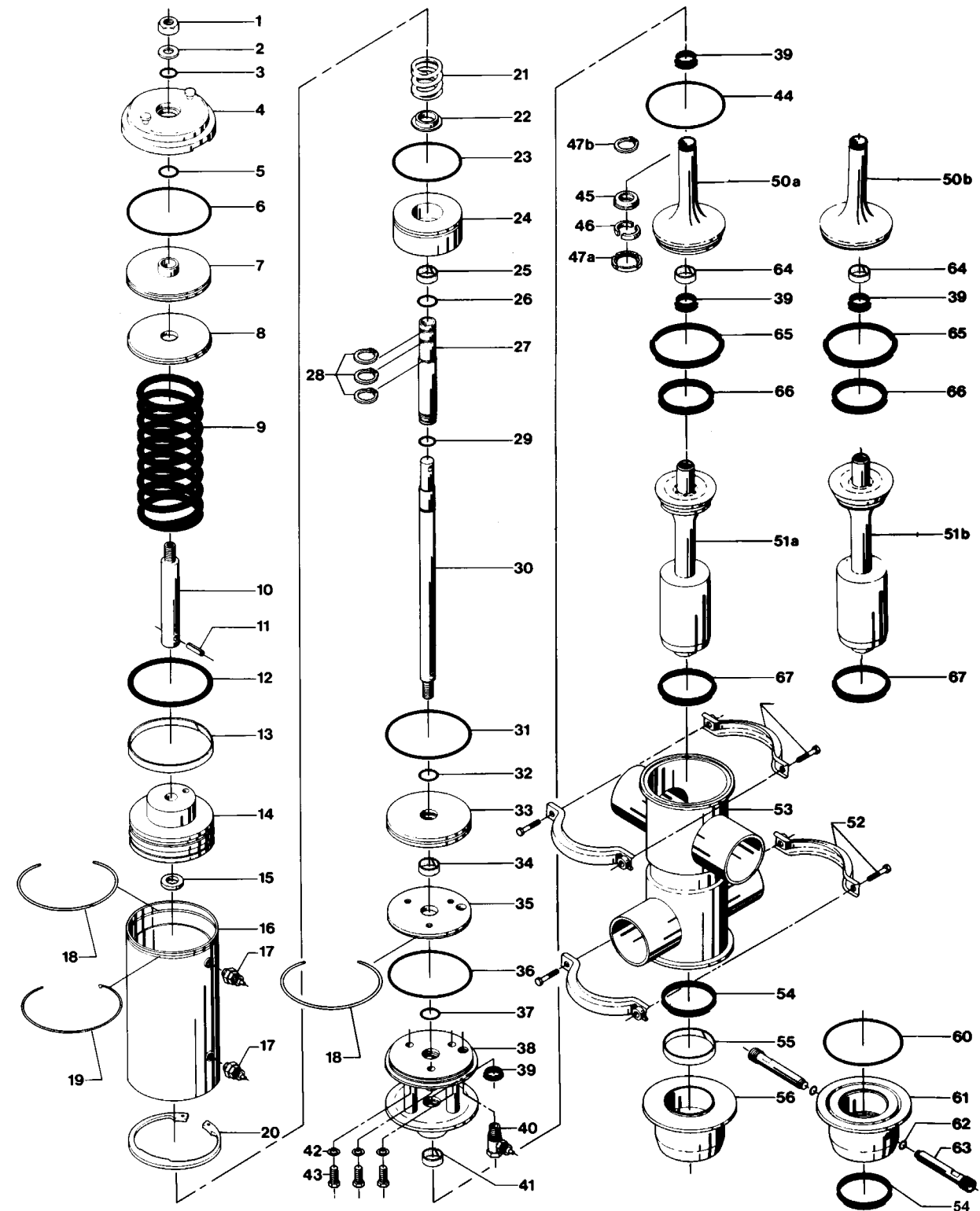
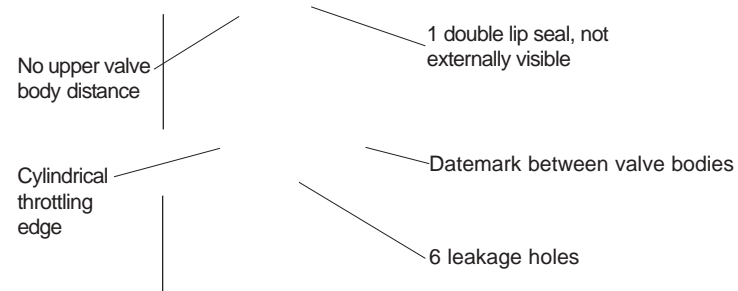
Surface roughness, inside of valve body:  $Ra \leq 0.8 \mu m$

Pos.	Qty.	Denomination	51 mm	63.5 mm	76 mm	101.6 mm
53	1	Valve body 11-00 .....	9612-4616-01	9612-4616-05	9612-4616-09	9612-4618-05
	1	Valve body 12-00 .....	9612-4616-02	9612-4616-06	9612-4616-10	9612-4618-06
	1	Valve body 21-00 .....	9612-4612-03	9612-4616-07	9612-4616-11	9612-4618-07
	1	Valve body 22-00 .....	9612-4616-04	9612-4616-08	9612-4616-12	9612-4618-08
	1	Valve body 11-90 .....	9612-4616-13	9612-4616-17	9612-4616-21	9612-4618-21
	1	Valve body 12-90 .....	9612-4616-14	9612-4616-18	9612-4616-22	9612-4618-22
	1	Valve body 21-90 .....	9612-4616-15	9612-4616-19	9612-4616-23	9612-4618-23
	1	Valve body 22-90 .....	9612-4616-16	9612-4616-20	9612-4616-24	9612-4618-24
	1	Valve body 11-180 .....	9612-4616-25	9612-4616-26	9612-4616-27	9612-4618-34
	1	Valve body 11-270 .....	9612-4616-28	9612-4616-29	9612-4616-30	9612-4618-38

Pos.	Qty.	Denomination	NW 50	NW 65	NW80	NW100
53	1	Valve body 11-00 .....	9612-4614-01	9612-4614-05	9612-4618-09	9612-4618-13
	1	Valve body 12-00 .....	9612-4614-02	9612-4614-06	9612-4618-10	9612-4618-14
	1	Valve body 21-00 .....	9612-4614-03	9612-4614-07	9612-4618-11	9612-4618-15
	1	Valve body 22-00 .....	9612-4614-04	9612-4614-08	9612-4618-12	9612-4618-16
	1	Valve body 11-90 .....	9612-4614-13	9612-4614-17	9612-4618-25	9612-4618-29
	1	Valve body 12-90 .....	9612-4614-14	9612-4614-18	9612-4618-26	9612-4618-30
	1	Valve body 21-90 .....	9612-4614-15	9612-4614-19	9612-4618-27	9612-4618-31
	1	Valve body 22-90 .....	9612-4614-16	9612-4614-20	9612-4618-28	9612-4618-32
	1	Valve body 11-180 .....	9612-4614-25	9612-4614-26	9612-4618-35	9612-4618-36
	1	Valve body 11-270 .....	9612-4614-28	9612-4614-29	9612-4618-39	9612-4618-40

Not manufactured anymore

**2. (Period 9410 - 9708)**



Not manufactured anymore

Reg. 2.12.16	9805
Intro.	9410

Reg. 2.12.17	9805

# Sanitary Mixproof Valve Type SMP-SC - Seal Ring Plug (51-101.6 mm / NW50-100)

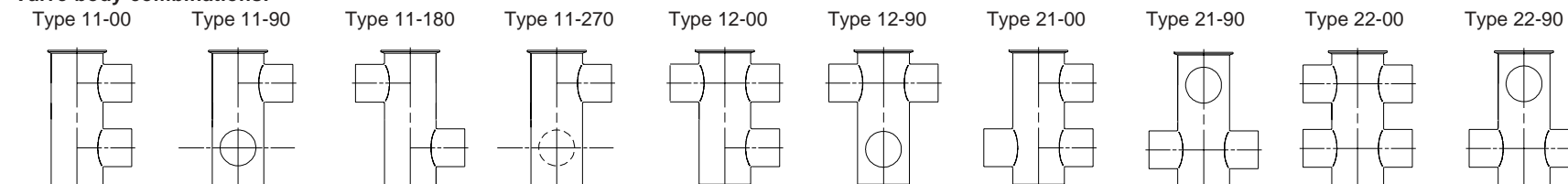
Pos.	Qty.	Denomination	51-76 mm NW50-65	101.6 mm NW80-100
1	1	Nut .....	9611-99-2576	9611-99-2576
2	1	Washer .....	223101-35	223101-35
3	1	O-ring, NBR .....	9611-99-0096	9611-99-0096
4	1	Cylinder lid .....	9612-2916-01	9612-3121-01
5	1	O-ring, NBR .....	223406-25	223406-25
6	1	O-ring, NBR .....	260104-67	9611-99-2579
7	1	Upper piston .....	9612-2913-01	9612-3101-01
8	1	Flange .....	9612-2914-01	9612-3102-01
9	1	Spring .....	9612-2928-01	9612-3154-01
10	1	Upper piston rod .....	9612-2910-01	9612-3104-01
11	1	Pin .....	9611-99-2562	9611-99-1314
12	1	O-ring, NBR .....	9611-99-2556	9611-99-2580
13	1	Guide ring, Turcite .....	9612-2926-01	9612-2926-08
14	1	Main piston .....	9612-2935-01	9612-3105-01
15	1	Support washer .....	9612-2911-01	
16	1	Cylinder .....	9612-2918-01	9612-3137-01
17	2	Air fitting .....	9611-99-2563	9611-99-2563
18	2	Retaining ring .....	9612-2929-01	9612-2929-02
19	1	Lock ring .....	9612-2930-01	9612-3132-01
20	1	Circlip .....	9611-99-2561	9611-99-2589
21	1	Spring .....	9612-2927-01	9612-3155-01
22	1	Spring support .....	9612-2912-01	9612-3106-01
23	1	O-ring, NBR .....	9611-99-2568	9611-99-0643
24	1	Piston .....	9612-2906-01	9612-3107-01
25	1	Guide ring, Turcite .....		9612-2926-04
26	1	O-ring, NBR .....	223406-25	9611-99-2582
27	1	Lower piston rod .....	9612-2959-01	9612-3134-01
28	3	Circlip .....	9611-99-2565	9611-99-2588
29	1	O-ring, NBR .....	223404-31	223406-25
30	1	Inner stem .....	9612-3130-01	9612-3547-01
31	1	O-ring, NBR .....	260104-67	9611-99-2580
32	1	O-ring, NBR .....	223406-25	9611-99-2581
33	1	Lower piston .....	9612-2905-01	9612-3147-01
34	1	Guide ring, Turcite .....		9612-2926-10
35	1	Flange .....	9612-2915-01	9612-3120-01
36	1	O-ring, NBR .....	260104-67	9611-99-2579
37	1	O-ring, NBR .....	223406-25	9611-99-2581
38	1	Bonnet .....	9612-2919-01	9612-3144-01
39	3	Lip seal, EPDM (Standard) .....	9612-3205-01	9612-3168-01
	3	Lip seal, NBR .....	9612-3205-02	9612-3168-02
	3	Lip seal, FPM .....	9612-3205-03	9612-3168-03
40	1	Air fitting .....	9611-99-2564	9611-99-2564
41	1	Guide ring, PTFE .....	9612-2926-07	9612-2926-09
42	3	Washer .....	9611-99-2572	9611-99-2590
43	3	Screw .....	9611-99-0462	9611-99-1910
44	1	O-ring, EPDM (Standard) .....	9611-99-2700	9611-99-2702
	1	O-ring, NBR .....	9611-99-2701	9611-99-2703
	1	O-ring, FPM .....	9611-99-2959	9611-99-2693
45	1	Lock ring .....	9612-2983-01	9612-3136-01
46	2	Clamp ring .....	9612-2960-01	9612-3135-01
47a	1	Clip ring .....	31353-0727-1	
47b	1	Circlip .....		9611-99-2663
50a	1	Upper plug .....	9612-3914-01	9612-3917-01
	1	Upper plug, EPDM (Pos.39+50a+64+65+66) .....	9612-4089-01	9612-4089-04
	1	Upper plug, NBR (Pos.39+50a+64+65+66) .....	9612-4089-02	9612-4089-05
	1	Upper plug, FPM (Pos.39+50a+64+65+66) .....	9612-4089-03	9612-4089-06
51a	1	Lower plug .....	9612-3913-01	9612-3916-01
	1	Lower plug, EPDM (Pos.51a+71) .....	9612-4090-01	9612-4090-04
	1	Lower plug, NBR (Pos.51a+71) .....	9612-4090-02	9612-4090-05
	1	Lower plug, FPM (Pos.51a+71) .....	9612-4090-03	9612-4090-06
52	2	Clamp complete .....	9611-31-105-5	9611-31-105-7
54	1	Double lip seal, EPDM (Standard) .....	9612-3175-01	9612-3204-01
	1	Double lip seal, NBR .....	9612-3175-02	9612-3204-02
	1	Double lip seal, FPM .....	9612-3175-03	9612-3204-03

Pos.	Qty.	Denomination	51-76 mm NW50-65	101.6 mm NW80-100
55	1	Guide ring, PTFE .....	9612-2926-02	9612-2926-06
56	1	Balancing housing (Standard) .....	9612-3256-01	9612-3285-01
64	1	Guide ring .....	9612-2926-11	9612-2926-12
65	1	Seal ring, EPDM, (Standard) .....	9612-3593-03	9612-3593-09
	1	Seal ring, NBR .....	9612-3593-01	9612-3593-07
	1	Seal ring, FPM .....	9612-3593-02	9612-3593-08
66	1	Seal ring, EPDM, (Standard) .....	9612-3594-06	9612-3594-03
	1	Seal ring, NBR .....	9612-3594-04	9612-3594-01
	1	Seal ring, FPM .....	9612-3594-05	9612-3594-02
67	1	Seal ring, EPDM (Standard) .....	9612-3593-06	9612-3593-12
	1	Seal ring, NBR .....	9612-3593-04	9612-3593-10
	1	Seal ring, FPM .....	9612-3593-05	9612-3593-11
<b>Accessories</b>				
	1	Tool complete for actuator .....	9612-3174-01	9612-3174-01
<b>Service kit for actuator</b>				
□	1	Service kit A, NBR .....	9611-92-0127	9611-92-0130
<b>Service kit for product wetted parts</b>				
Δ	1	Service kit B, EPDM .....	9611-92-0200	9611-92-0203
Δ	1	Service kit B, NBR .....	9611-92-0201	9611-92-0204
Δ	1	Service kit B, FPM .....	9611-92-0202	9611-92-0205
<b>Service kit for valve with CIP-connection on balancing housing</b>				
○	1	Service kit C, EPDM .....	9611-92-0206	9611-92-0209
○	1	Service kit C, NBR .....	9611-92-0207	9611-92-0210
○	1	Service kit C, FPM .....	9611-92-0208	9611-92-0211

Parts marked with □ are included in **Service kit A**.  
 Parts marked with Δ are included in **Service kit B**.  
 Parts marked with ○ are included in **Service kit C**.

Pos.	Qty.	Denomination	51 mm	63.5 mm	76 mm	101.6 mm	NW 50	NW 65	NW80	NW100
53	1	Valve body 11-00 .....	9612-3273-01	9612-3273-05	9612-3273-09	9612-3280-01	9612-3274-01	9612-3274-05	9612-3280-05	9612-3280-09
	1	Valve body 12-00 .....	9612-3273-02	9612-3273-06	9612-3273-10	9612-3280-02	9612-3274-02	9612-3274-06	9612-3280-06	9612-3280-10
	1	Valve body 21-00 .....	9612-3273-03	9612-3273-07	9612-3273-11	9612-3280-03	9612-3274-03	9612-3274-07	9612-3280-07	9612-3280-11
	1	Valve body 22-00 .....	9612-3273-04	9612-3273-08	9612-3273-12	9612-3280-04	9612-3274-04	9612-3274-08	9612-3280-08	9612-3280-12
	1	Valve body 11-90 .....	9612-3273-13	9612-3273-17	9612-3273-21	9612-3280-13	9612-3274-09	9612-3274-13	9612-3280-17	9612-3280-21
	1	Valve body 12-90 .....	9612-3273-14	9612-3273-18	9612-3273-22	9612-3280-14	9612-3274-10	9612-3274-14	9612-3280-18	9612-3280-22
	1	Valve body 21-90 .....	9612-3273-15	9612-3273-19	9612-3273-23	9612-3280-15	9612-3274-11	9612-3274-15	9612-3280-19	9612-3280-23
	1	Valve body 22-90 .....	9612-3273-16	9612-3273-20	9612-3273-24	9612-3280-16	9612-3274-12	9612-3274-16	9612-3280-20	9612-3280-24
	1	Valve body 11-180 .....	9612-3273-25	9612-3273-26	9612-3273-27	9612-3280-25	9612-3274-17	9612-3274-18	9612-3280-26	9612-3280-27
	1	Valve body 11-270 .....	9612-3273-28	9612-3273-29	9612-3273-30	9612-3280-28	9612-3274-19	9612-3274-20	9612-3280-29	9612-3280-30

**Valve body combinations:**



Recommended Spare Parts: **Service kit**.

Not manufactured anymore

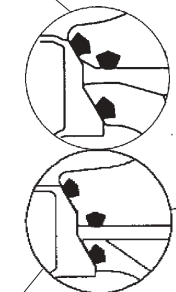
Reg. 2.12.17	9805
Intro.	9310

**Sanitary Mixproof Valve  
Type SMP-SC - Seal Ring Plug  
(51-101.6 mm / NW50-100)**

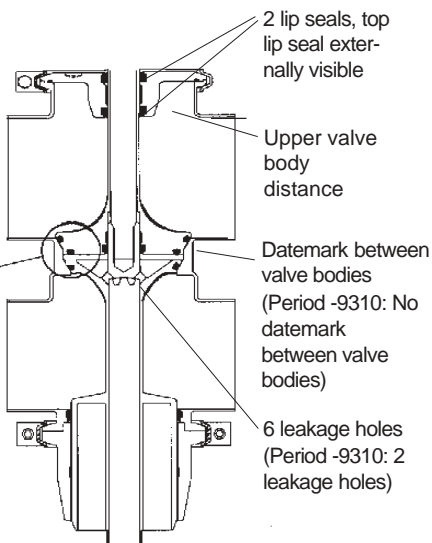
Not manufactured anymore

**1. (Period - 9409)**

(Period -9310: No cylindrical throttling)



Cylindrical throttling edges



2 lip seals, top lip seal externally visible

Upper valve body distance

Datemark between valve bodies  
(Period -9310: No datemark between valve bodies)

6 leakage holes  
(Period -9310: 2 leakage holes)

Reg. 2.12.17	9805
Intro.	9310